



**Integrated Data Protection Appliance**

# DELL EMC INTEGRATED DATA PROTECTION APPLIANCES

Dell EMC Integrated Data Protection Appliance (IDPA) provides comprehensive and converged data protection. The pre-integrated appliance is simple to deploy and scale, and supports a diverse application ecosystem, including support for modern applications like MongoDB and MySQL.

Enjoy faster time to protection with an integrated solution that brings together protection storage and software, search and analytics, plus an easy-to-use IDPA system manager in a single appliance. Extend data protection seamlessly to private and public clouds with cloud tier and cloud disaster recovery. Gain business agility with a solution that is fast and modern—your data is protected more efficiently and can be recovered quicker. You'll get the high value you've come to expect from Dell EMC, the number one data protection provider, with industry leading deduplication.

## Specifications

**Table 1. IDPA Performance and Capacity**

	DP5300	DP5800	DP8300	DP8800
<b>MAXIMUM THROUGHPUT<sup>1</sup></b>	Up to 24 TB/hr.	Up to 32 TB/hr.	Up to 41 TB/hr.	Up to 68 TB/hr.
<b>MAXIMUM LOGICAL CAPACITY<sup>1,2</sup></b>	Up to 6.5 PB	Up to 14.4 PB	Up to 36 PB	Up to 50 PB
<b>W/ CLOUD TIER</b>	Up to 6.5 PB <sup>3</sup>	Up to 43.2 PB	Up to 108 PB	Up to 150 PB
<b>MAXIMUM USABLE CAPACITY</b>	34 to 130 TB	96 to 288 TB	192 to 720 TB	624 to 1 PB
<b>W/ CLOUD TIER</b>	Up to 130 TB <sup>3</sup>	Up to 864 TB	Up to 2.16 PB	Up to 3 PB
<b>PROCESSOR</b>	Intel Xeon	Intel Xeon	Intel Xeon	Intel Xeon
<b>DRIVE TYPE</b>	SAS 4 TB	SAS 4 TB	SAS 4 TB	SAS 4 TB
<b>BUILT-IN NETWORKING</b>	6x40GbE Customer uplinks. Each Quad SFP port can be split to 4x10GbE uplinks			

<sup>1</sup> Top-end values are maximums – actual capacity & throughput depends on application workload, deduplication, and other settings.

<sup>2</sup> Mix of typical enterprise backup data (file systems, databases, email, developer files). The low end of capacity range represents a full backup weekly or monthly, incremental backup daily or weekly, to system capacity. The top end of the range represents full backup daily, to system capacity. All capacity values are calculated using Base10 (i.e., 1 TB = 1,000,000,000,000 bytes).

<sup>3</sup> Cloud Tier is not available on DP5300.



<b>Table 2. IDPA Physical specifications and environmentals<sup>4</sup></b>				
	<b>DP5300</b>	<b>DP5800</b>	<b>DP8300</b>	<b>DP8800</b>
<b>WEIGHT (LBS)</b>	462 lbs.	450 lbs.	734 lbs.	846 lbs.
<b>DIMENSIONS</b>	40U rack Height: 75 in (190.8 cm); Width: 24.0 in (61.1 cm); Depth: 39.0 in (99.2 cm)			
<b>POWER</b> <b>100-120/200-240V~</b> <b>50/60 HZ</b>	1,968 VA	1,989 VA	3,117 VA	3,865 VA
<b>THERMAL RATING (BTU/HR)</b>	5,833	5,935	9,479	14,243
<b>OPERATING TEMPERATURE/ ALTITUDE<sup>4</sup></b>	10°C to 35°C, 35°C at 7,500 ft.	10°C to 35°C, 35°C at 7,500 ft.	10°C to 35°C, 35°C at 7,500 ft.	10°C to 35°C, 35°C at 7,500 ft.
<b>NON-OPERATING (TRANSPORTATION) TEMPERATURE</b>	-40°C to +65°C (-40°F to +149°F)	-40°C to +65°C (-40°F to +149°F)	-40°C to +65°C (-40°F to +149°F)	-40°C to +65°C (-40°F to +149°F)
<b>OPERATING HUMIDITY</b>	20% to 80% non-condensing	20% to 80% non-condensing	20% to 80% non-condensing	20% to 80% non-condensing

<sup>4</sup> Does not include the environmental requirements for capacity shelves. For a specific IDPA capacity configuration, the appropriate capacity for the installed DS60 Expansion shelves must be added to the configuration (see below).

Note: Power, thermal and weight requirements are for the configuration without any capacity shelves or cloud tier metadata shelves. To determine the power requirements, please see the section below on expansion shelves.

<b>Table 3. IDPA Regulatory approvals<sup>5</sup></b>				
	<b>DP5300</b>	<b>DP5800</b>	<b>DP8300</b>	<b>DP8800</b>
<b>SAFETY</b>	UL 60950-1, CSA 60950-1, EN 60950-1, IEC 60950-1, GS, SABS, GOST, IRAM			
<b>EMISSIONS</b>	FCC Class A, EN 55022, CISPR 22, VCCI, BSMI, MIC, ICES-003			
<b>IMMUNITY</b>	EN 55024, CISPR 24			
<b>POWER LINE HARMONICS</b>	EN 61000-3-2			

<sup>5</sup> Derate 1.1°C/1,000 ft. above 7,500 ft. to 10,000 ft.

## IDPA Rack

### Power configuration

Single phase is standard, optional 3-phase. Four power inlet connections. Two power domains (base and extended), each redundant

### Plug types

NEMA L6-30p or IEC 60309 332P6

### **Power capacity**

200-240 V~, single-phase, 47-63 Hz 4,800 VA (base configuration) 9,600 VA (extended configuration)

### **AC protection**

30 A site circuit breaker on each power domain

### **Dimensions**

40U available rack capacity

Height: 75 in (190.8 cm); Width: 24.0 in (61.1 cm); Depth: 39.0 in (99.2 cm)

Weight: 380 lbs. (173 kg) when empty

## **DS60 EXPANSION SHELF**

### **External interface (host/expansion)**

Quad 8 lane 12 Gb/s serial attached SCSI II (SAS) ports per Link Control Card (LCC). Half of each port is blocked allowing the use of standard mini-SAS-HD connectors. One port is used for the host connection and the other is used for expansion. The host controller runs at 6Gb/s to the DS60.

### **Connector type**

SFF-8088 connectors (mini-SAS)

### **SAS cable length**

Up to 5 meters

### **Disk drives**

60-drive bays per DS60 expansion shelf, support low profile, one inch high, 3.5-inch form factor drives

Drives Choices: SAS (6 Gb/s), 3 TB or 4 TB, and 7200 RPM

### **Dimensions**

Height: 8.75 in (22.23 cm) 5U (4U plus 1U cable management tray)

Width including rails: 17.50 in (44.45 cm)

Depth (chassis only): 34.5 in (87.63 cm)

Maximum depth (fully configured): 36.4 in (92.46 cm)

Weight: 225.0 lbs. (90.7 kg) (with 60 HDD installed)

### **Operational**

Power: 980 VA or 931W (200-240V ~, 47 to 63 Hz)

Thermal Rating: 3177 BTU/hr.

#### Operating:

Ambient temperature: 41° F to 104° F (5° C to 40° C)

Temperature gradient: 18° F/hr. (10° C/hr.)

Relative humidity extremes: 20% to 80% noncondensing

Elevation: -50 to 7500 ft. (-16 to 2300 m)

#### Non-Operation (Transportation):

Ambient temperature: -40° F to 149° F (-40° C to 65° F)

Temperature gradient: 45° F/hr. (25° C/hr.)

Relative humidity: 10% to 90% noncondensing

Elevation: -50 to 35,000 ft. (-16 to 10,600 m)

## ES30 EXPANSION SHELF

### External interface (host/expansion)

Dual 4 lane 6 Gb/s serial attached SCSI II (SAS) ports per Link Control Card (LCC)— one for host and one for expansion

### Connector type

SFF-8088 connectors (mini-SAS)

### SAS cable length

Up to 5 meter

### Disk drives

15-drive bays per ES30 expansion shelf, support low profile, one inch high, 3.5-inch form factor drives Drives Choices\*  
SAS (6 Gb/s), 3 TB or 2 TB, & 7200 RPM

### Dimensions

Height: 5.25 in (13.34 cm)

Width: 19.0 in (48.3 cm)

Depth: 14.0 in (35.56 cm)

Weight: 68 lbs (30.8 kg)

### Operational

Power (VA): 280VA or 235W, (100-240V ~, 47 to 63 Hz)

Thermal Rating: 800 BTU/hr

Operating Temperature:

Ambient temperature: 41o F to 104o F (5o C to 40o C)

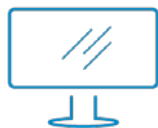
Temperature gradient: 18o F/hr (10o C/hr)

Relative humidity extremes: 20% to 80% noncondensing

Elevation: -50 to 7500 ft (-16 to 2300 m)

Non-Operating (Transportation) Temperature:

Ambient temperature: -40o F to 149o F (-40o C to 65o F)



[Learn more](#) about Dell  
EMC Integrated Data  
Protection Appliance



[Contact](#) a Dell EMC Expert