

Dell EMC XC Series Enhanced Data Protection

Full lifecycle integration means turnkey simplicity at every stage

Dell EMC XC Series

The Dell EMC™ XC Series of hyper-converged appliances are the ideal solution for organizations who need the flexibility of hypervisor choice, including Hyper-V®.



Built on the PowerEdge server platform, these purpose built appliances contain 150 custom requirements specifically tailored to support hyper-converged workloads that depend on the tenets of both servers and storage. These requirements span 6 key design categories and include optimizations such as the BOSS boot mechanism, SSDs selected based on their proven ability to deliver consistent performance, Open Manage Essentials systems management, and improved drive cooling to maximize reliability.

The Nutanix software incorporates many of the advanced software technologies that power leading cloud infrastructures such as Google®, Facebook® and Amazon™ — but is engineered for all enterprises, regardless of size. Seamlessly integrating server and storage resources in a self-healing system that is deployed as a centrally managed cluster, it is easily expanded one node at a time for pay-as-you-grow flexibility with multi-generational hardware compatibility.

With its rich ecosystem of integrated Dell EMC solutions, and backed by Dell EMC's Global Service and Support organization, the XC Series is the ideal foundation for building a modern, modular data center.

The need for enhanced data protection

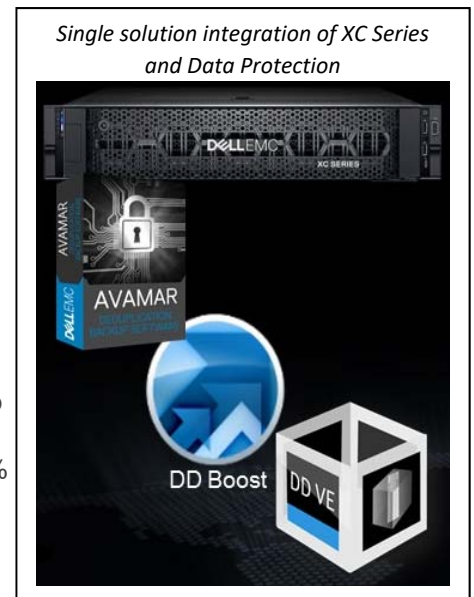
Modernization of core IT infrastructure has proven to yield significant benefits for companies of all sizes, and research shows that hyper-converged infrastructure is now the top planned on-premises investment businesses are looking to make over the next 3 years. With a proven record of increasing productivity while reducing cost by streamlining management and drastically reducing unplanned downtime, hyper-converged infrastructure solutions like the Dell EMC XC Series, have reset expectations of on-premises infrastructure. Now considered a mature technology, hyper-converged infrastructure is going beyond initial workloads, and today 75% of deployments are being used to support core data center applications. This increased adoption as core infrastructure is driving the need for enhanced data protection solutions beyond the built in software features of the hyper-converged architecture in order to protect mission critical data.

XC Series integrated enhanced data protection

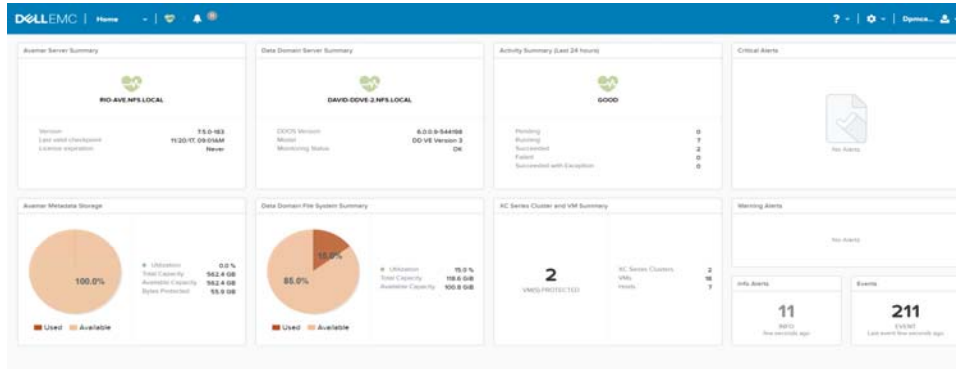
With a complete portfolio of best of breed data protection solutions, Dell EMC is not only able to offer enhanced data protection options for the XC Series, we can offer it in an integrated turnkey fashion that users now expect from a hyper-converged solution. This integrated solution utilizes Avamar VE® running as a VM on an XC Series cluster that backs up to a Data Domain® target which features native cloud tiering to send deduplicated and encrypted data to the cloud for long term retention. Managing the integrated solution is the XC Series Data Protection Management Console (DPMC), a new Dell EMC innovation exclusive to the XC Series that facilitates automation and provides operational simplicity to the combined solution.

- Centralized management with built in automation to streamline backup operations
- Reduce backup times by up to 50%
- Reduced network traffic by up to 99%
- 4.6X better deduplication resulting in 36X reduced backup storage needs

Deployed, managed, and supported as a single solution, this integration extends the turnkey hyper-converged experience to provide complete data protection capabilities to the XC Series' virtual environment without the complexity of a multi-vendor or DIY solution.



Seamless integration through the Data Protection Management Console



XC Series Data Protection Management Console is a new management framework exclusive to the XC Series. For users running Prism Central 5.5.x, this Dell EMC innovation is launched with a single click from within the Prism management console and is capable of monitoring and managing common data protection functions for multiple XC Series clusters through a single interface.

Simple

- Single pane of glass view of Avamar and Data Domain summaries with alerts and activity log
- Common look and feel with Prism provides ease of use and enabled workforce collaboration between IT teams

Fast

- Single click functionality for on demand backup of VM's and editing individual VM backup policies
- Quickly set retention policies for multiple clusters

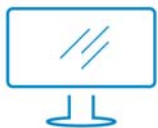
Efficient

- Built in runtime automation takes care of common backup management tasks and protects XC Series clusters with predefined data protection policies to reduce ongoing management
- Protect new VMs by applying policies at the cluster level automatically

Solution level Dell EMC XC Series support and deployment services

Dell EMC's trusted ProSupport and ProDeploy offerings support the full combined XC Series and data protection solution to streamline the lifecycle experience. ProDeploy provides full service installation and configuration of both hardware and system software by Dell EMC certified deployment engineers. To prepare for the deployment, we conduct a site readiness review and implementation planning. System testing, validation and full project documentation with knowledge transfer complete the process. Dell EMC also offers Residency Services for customers requiring dedicated XC Series experts for an extended period of time. Residents share knowledge and best practices with IT staff to enable a faster technology transition and to optimize their data center.

The ProSupport teams for XC Series are specially trained to address the needs of hyper-converged infrastructure customers. Automated proactive and predictive tools and technologies help avoid issues and get faster resolution. ProSupport experts are always accessible 24x7x365 by phone, email, chat and social media across 124 countries and 55 languages served by more than 1,000 parts distribution centers.



[Learn more](#) about the Dell EMC XC Series Integrated Data Protection



[Contact](#) a Dell EMC Expert



[View more](#) resources



Join the conversation with #DPMC