

Dashboards that simplify and streamline IT Operations

Unified

- Top-Down topology of converged infrastructure
- Inventory
- Relationships and dependencies

Data Rich

- Health status
- Performance and capacity metrics

Proactive

- Health status
- Trending and anomaly detection
- Alert management

Fast Answers to Critical Questions

- What is my inventory of Dell EMC converged systems, their components, their relationships and dependencies?
- What is the availability and performance of compute, storage and network assets across my converged systems?
- How are my system resources being consumed, and how much available capacity is there?
- What converged infrastructure conditions should I be aware of before they seriously impact workload performance and capacity?
- When I need to repair or replace a system component, where is the best place to temporarily move workloads or data while undergoing maintenance?

VCE™ MANAGEMENT PACK FOR VMWARE VREALIZE™ OPERATIONS 1.0

Combines Converged Infrastructure Architecture Awareness with Virtualization Management to Optimize IT Processes

VCE™ Management Pack (MP) for VMware vRealize Operations 1.0 is a software package that provides VMware vRealize™ Operations (vROps) dashboards with a unified, data rich and proactive view of Dell EMC Vblock® Systems and VxBlock™ Systems converged infrastructure systems that support VMware vSphere virtualized environments.

VCE MP simplifies and streamlines data center and private cloud operations by combining multisystem, converged infrastructure architecture awareness with virtualization management in a common vROps user interface.

The package integrates information from VCE Vision™ Intelligent Operations, the monitoring software installed on Dell EMC Vblock Systems and VxBlock Systems, with vROps for visualization, monitoring, analytics, and diagnosis of converged infrastructure, including:

- Top-down topology
- Performance and capacity metrics
- Anomaly detection
- Alert management

ARCHITECTURE-AWARE MONITORING

VCE Vision™ software architectural awareness simplifies and streamlines data center/private cloud operations by giving you a unified, systems view—versus a siloed view—of the compute, storage, and network technologies that comprise each Dell EMC converged infrastructure system.

Architecture-awareness, which the VCE Management Pack delivers to vROps dashboards, makes it easier to monitor the status of converged infrastructure-based data centers and private cloud environments.

The VCE Management Pack further improves operations by making information from VCE Vision software available for vROps to use for proactive analytics, automated capacity optimization, intelligent workload placement and balancing.

Dell EMC Converged Infrastructure Solution

Vblock® Systems and VxBlock™ Systems from Dell EMC simplify all aspects of IT operations and enable organizations to achieve better business outcomes faster. Seamlessly integrating best-in-class compute, network, and storage technologies from industry leaders Cisco, EMC, and VMware, Vblock Systems and VxBlock Systems deliver the world's most advanced converged infrastructure and provide dynamic pools of resources that can be intelligently provisioned and managed to address changing demands and rapidly shifting business opportunities.

VCE Vision™ Intelligent Operations software from Dell EMC simplifies IT operations through its unique awareness of Vblock System and VxBlock System architecture and the known good state for health and life cycle management.

Trusted by over 1,500 businesses and enterprise organizations globally, the market-leading Dell EMC converged infrastructure systems portfolio offers unmatched choice, flexibility, and reliability for transforming IT and accelerating operations to cloud speed.

DELIVERS VALUE ACROSS THE IT ORGANIZATION

Operations Monitoring Staff can get a cross-technology (versus a siloed) view of Dell EMC converged systems, making it easier to escalate issues to the right responder (administrator or engineer) to fix a specific technology that is impacting the virtual environment or putting its performance or availability at risk.

System Administrators can view the converged infrastructure topology and status of the IT assets that comprise their assigned technologies (compute, storage and network) to improve performance and capacity management.

IT Managers and Executive Stakeholders can get meaningful information about infrastructure status and capacity through custom reports in vROps based on current and historical data pulled from VCE Vision Software.

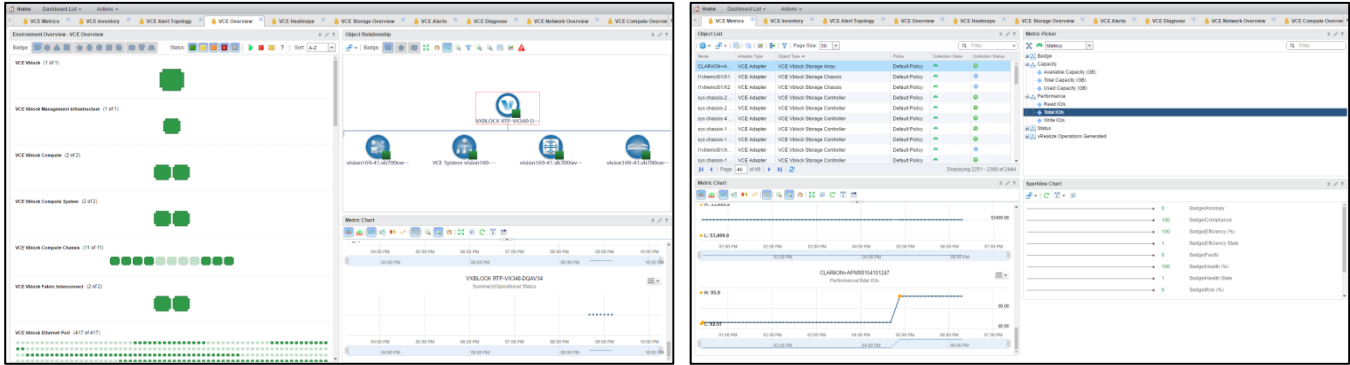
PRE-DEFINED AND CUSTOMIZABLE AUTO-POPULATED DASHBOARDS

The VCE Management Pack provides the following vROps dashboards for monitoring Dell EMC Vblock Systems and VxBlock Systems:

- VCE Overview
 - Top-down, full-system topology with component status
 - Compute, storage, and network domains
- VCE Compute Overview
 - Top-down, compute domain topology with component status
 - Cisco Unified Computing System
- VCE Network Overview
 - Top-down, system network topology with component status
 - Cisco LAN and SAN switches
- VCE Storage Overview
 - Top-down storage topology with component status
 - EMC storage arrays
- VCE Alerts
 - Alert listing
 - Based on events and changes in operational status
- VCE Alert Topology
 - Top-down topology of objects with alerts and impacted neighboring objects
- VCE Inventory
 - Full-system inventory listing
 - With meta data about components
- VCE Metrics
 - Performance and capacity indicators
 - Displayed in metric and spark line charts
- Heat Maps
 - Component and subcomponent availability and outages
 - Click for details capability
- VCE Diagnose
 - Components and their metrics
 - Topology graph of related components

Unified, Data Rich, Proactive Dashboards

The VCE Management Pack delivers insightful operational dashboards, including VCE Overview (left) for topological views of converged infrastructure systems and VCE Metrics (right) for converged infrastructure system performance and capacity indicators.



ABOUT DELL EMC

Dell EMC is the world market leader in converged infrastructure and converged solutions. Through Converged Infrastructure and Solutions, Dell EMC accelerates the adoption of converged infrastructure and cloud-based computing models that reduce IT costs while improving time to market. Dell EMC delivers the industry's only fully integrated and virtualized cloud infrastructure systems, allowing customers to focus on business innovation instead of integrating, validating, and managing IT infrastructure. Dell EMC solutions are available through an extensive partner network.

For more information, go to dell EMC.com/ci.

To learn more, contact your local representative or authorized reseller

