

**Preset Migration using
EMC[®] Documentum[®] Composer
Applied Best Practices**

**EMC Content Management
and Archiving**
Corporate Headquarters
Hopkinton, MA 01748-9103
1-508-435-1000
www.EMC.com

Copyright © 2009 EMC Corporation. All rights reserved.

Published April, 2009

EMC believes the information in this publication is accurate as of its publication date. The information is subject to change without notice.

THE INFORMATION IN THIS PUBLICATION IS PROVIDED “AS IS.” EMC CORPORATION MAKES NO REPRESENTATIONS OR WARRANTIES OF ANY KIND WITH RESPECT TO THE INFORMATION IN THIS PUBLICATION, AND SPECIFICALLY DISCLAIMS IMPLIED WARRANTIES OF MERCHANTABILITY OR FITNESS FOR A PARTICULAR PURPOSE.

Use, copying, and distribution of any EMC software described in this publication requires an applicable software license.

For the most up-to-date listing of EMC product names, see EMC Corporation Trademarks on EMC.com.

All other trademarks used herein are the property of their respective owners.

Preset Migration Using EMC Documentum Composer Applied Best Practices

P/N h6289

	About this Document	7
Chapter 1	Overview	9
Chapter 2	Preset Migration	11
	To migrate Presets	11
	Verifying the Preset migration	33
	To verify Preset migration	33

Figure 1	Selecting a workspace.....	11
Figure 2	Composer workbench	12
Figure 3	Selecting a wizard.....	13
Figure 4	Setting project name and description	14
Figure 5	Documentum Navigator displaying the new project in the left pane	15
Figure 6	Selecting artifacts from a repository	16
Figure 7	Selecting target project and repository login	17
Figure 8	Import Artifacts from Repository dialog box.....	18
Figure 9	Selecting an artifact.....	19
Figure 10	Viewing all the Presets available in a selected folder	20
Figure 11	Viewing the imported Preset in Composer Navigator	21
Figure 12	Properties dialog box for the selected artifact.....	22
Figure 13	Documentum Artifact page.....	23
Figure 14	Principal (User or Group) Installation Parameter dialog box.....	24
Figure 15	New Documentum Artifact – Name and Location wizard.....	25
Figure 16	Installation Parameter Artifact page	26
Figure 17	Principal (User or Group) Installation Parameter dialog box.....	27
Figure 18	Documentum Artifact page.....	28
Figure 19	Composer Navigator	29
Figure 20	Building the new Composer project from Composer Navigator.....	30
Figure 21	Installing the new project from Composer Navigator.....	31
Figure 22	Defining installation settings in the Install Wizard.....	32
Figure 23	Viewing successfully migrated Presets in Documentum Webtop.....	33

The scope of this white paper is to explain the Preset migration procedure using EMC Documentum Composer 6.5.

Audience

This white paper is intended for customers, partners, and consultants who are planning the migration of existing Presets from Global Repository version 6.0 to later versions.

Related documents

The following documents provide additional relevant information. Access to these documents is based on your login credentials. If you do not have access to the following content, contact your EMC representative:

- ◆ *EMC Documentum Composer Version 6.5 User Guide*
- ◆ *EMC Documentum Web Development Kit Version 6.5 Development Guide*
- ◆ *Migrating EMC Documentum Products from D5.3 to D6.5 and Beyond* white paper
- ◆ “How to move the Preset from one repository to another” Support Note **esg101411**

Chapter 1 Overview

Presets are the recommended means of configuring EMC® Documentum® Web Development Kit (WDK) and Documentum Webtop (WT)-based applications from Documentum version 6.0. Recognizing its advantages, several customers have already started using Presets. With version 6.5, Documentum customers have started migrating from earlier versions, and therefore prefer that all their Presets are also migrated to the upgraded version.

Besides, in a typical deployment scenario, the customer has a development environment used to stage and test the WDK/WT application deployment. This deployment is later migrated to the production environment after validation. Preset migration is considered in such a scenario.

By default, Presets in Documentum Webtop are stored in the Global Repository at the following location: `/Resources/Registry/Presets/Webtop`

- ◆ The source and target repository docbroker details must be specified in the `dfc.properties` file in Documentum Composer. For instructions, see the *EMC Documentum Composer Version 6.5 User Guide*.

To migrate Presets

1. Start Documentum Composer 6.5. The Workspace Launcher dialog box displays. It allows you to specify the location of your workspace.

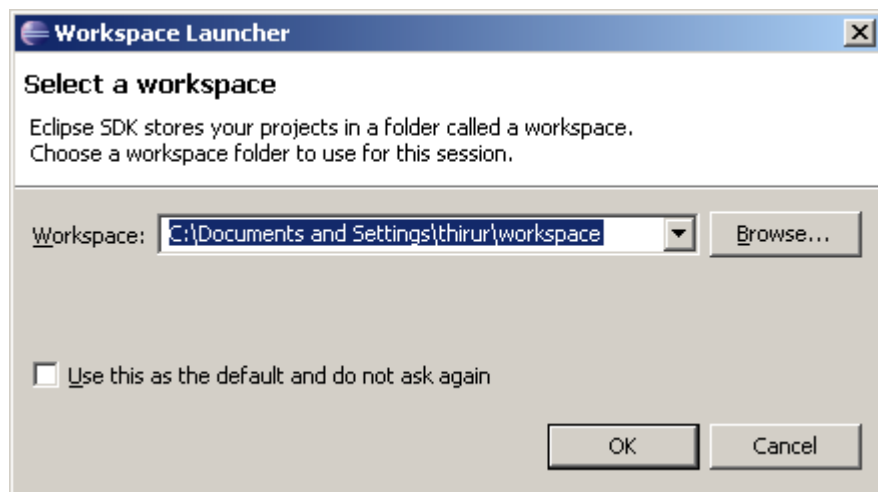


Figure 1 Selecting a workspace

2. Accept the default location for your workspace or enter a new location in the **Workspace** field, then click **OK**. The Composer workbench displays.

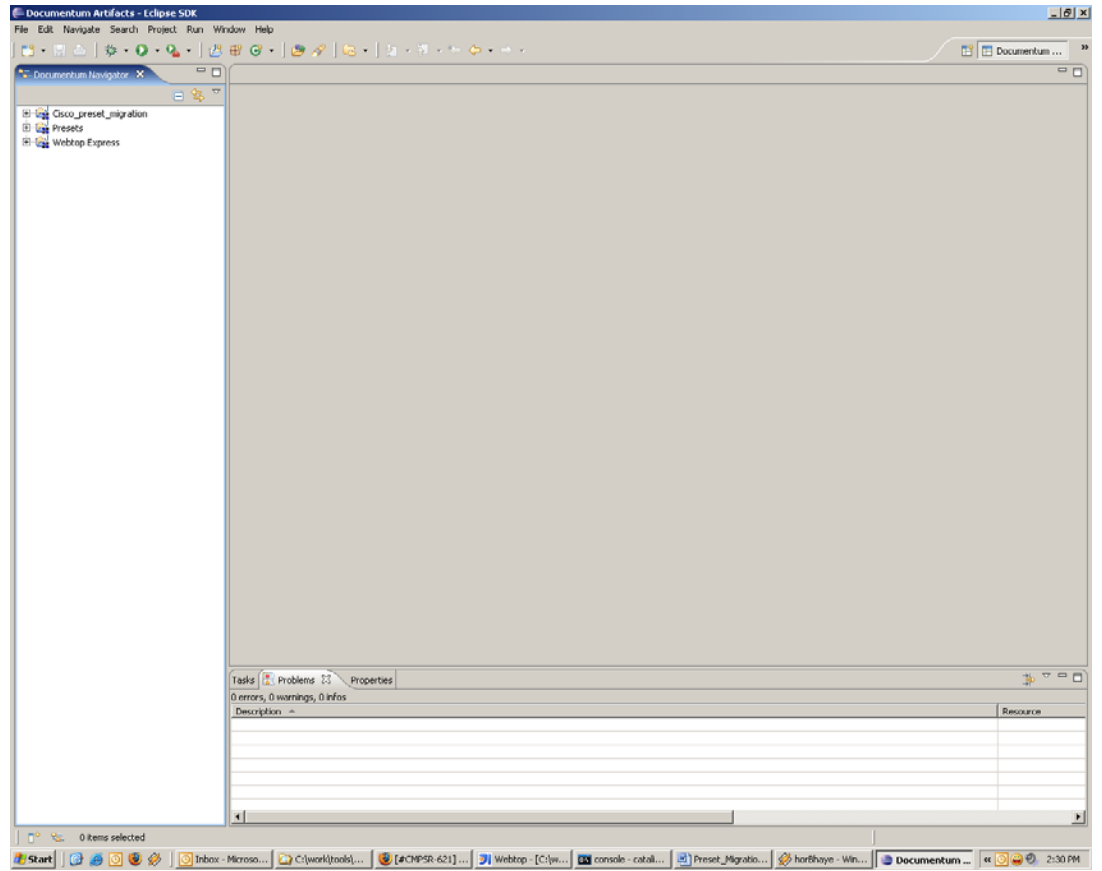


Figure 2 Composer workbench

3. Select **File > New > Project**. The New Project dialog box displays.

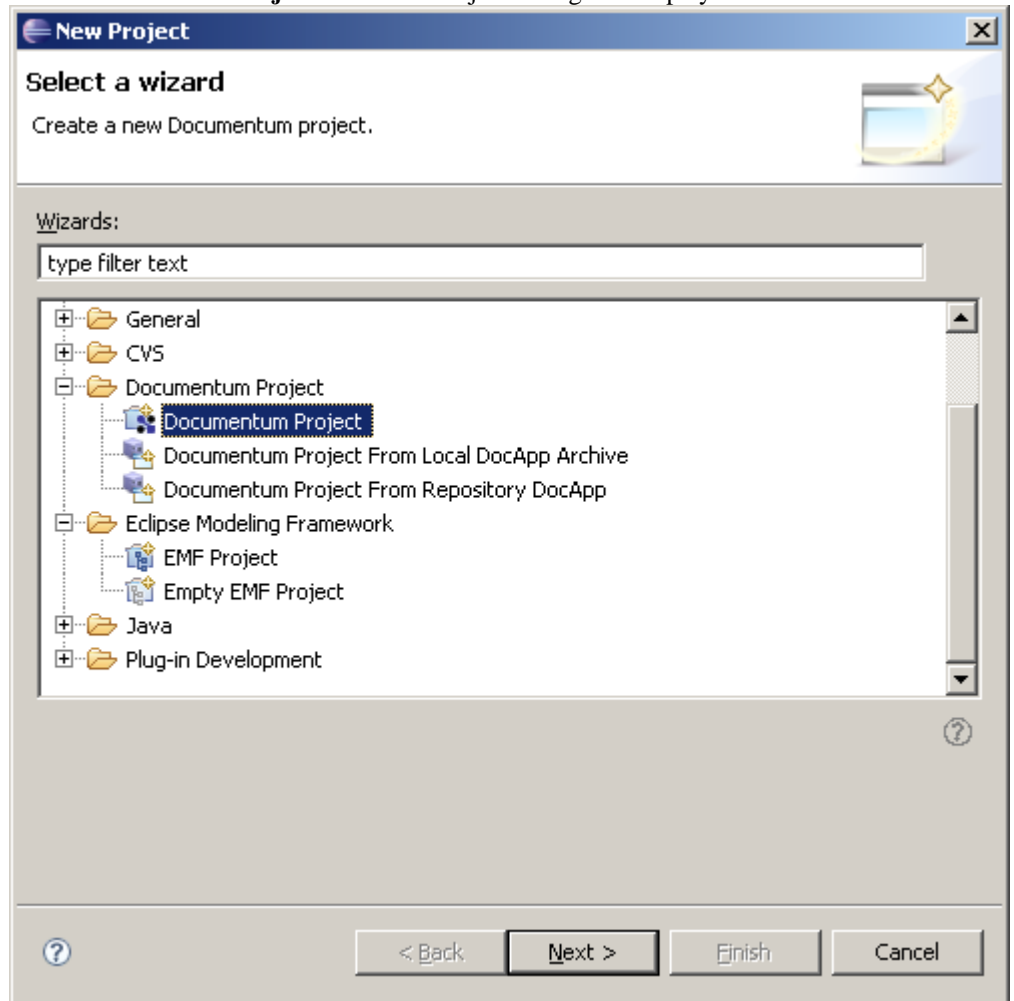


Figure 3 Selecting a wizard

4. Double-click the **Documentum Project** folder to expand it, then select **Documentum Project** and click **Next**. The New Documentum Project dialog box displays.

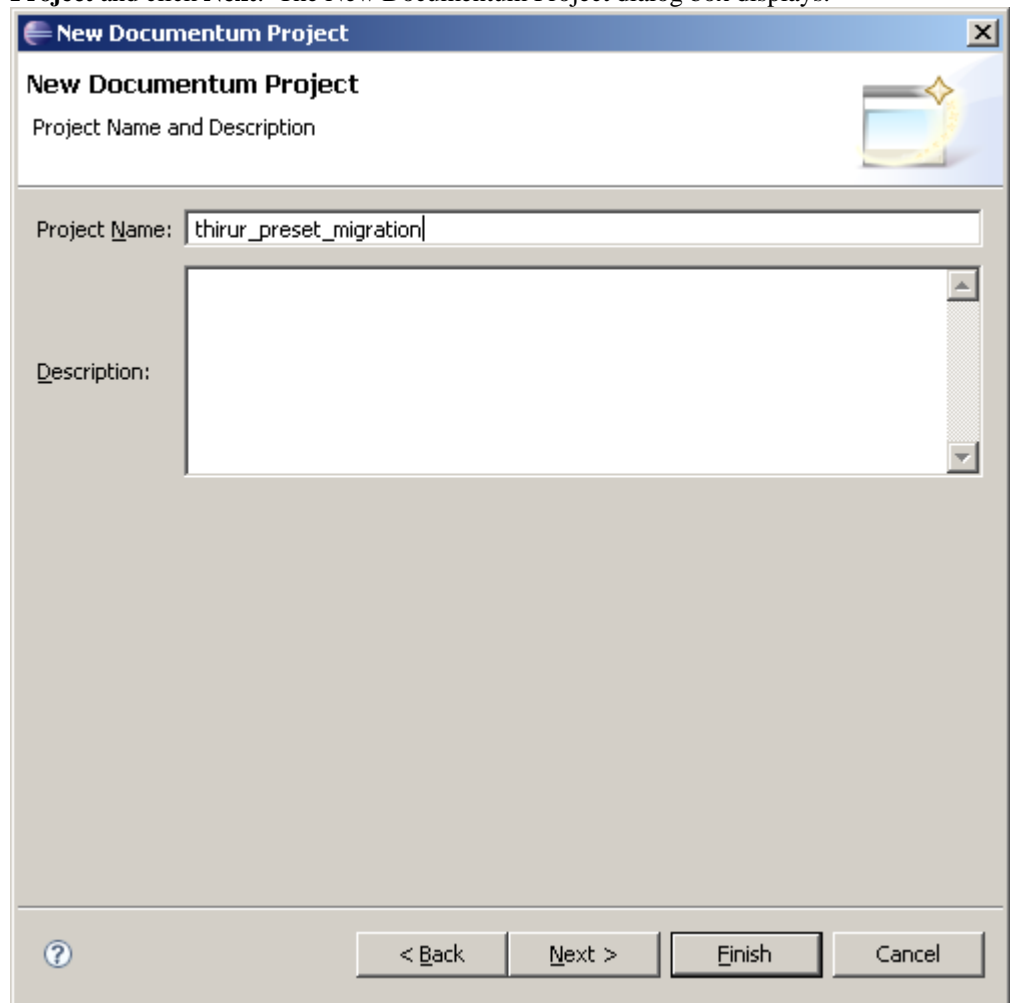


Figure 4 Setting project name and description

5. In the **Project Name** field, enter the name of your project, and an optional description in the **Description** field.
6. Click **Finish**. Composer creates the new project and displays it in Documentum Navigator. By default, each new project contains an Artifacts folder, Installation Parameter Files folder, src folder, and Web Services folder.

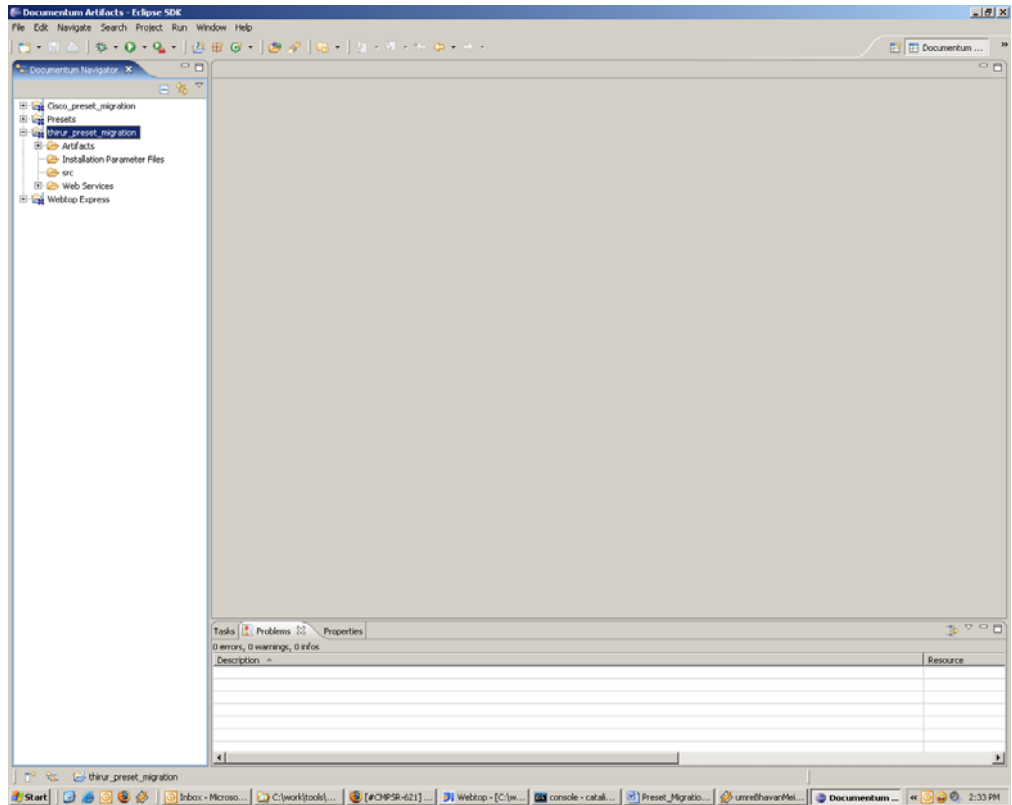


Figure 5 Documentum Navigator displaying the new project in the left pane

7. Double-click your new Documentum project folder to expand it, then right-click **Artifacts** and select **Import**. The Import dialog box displays.

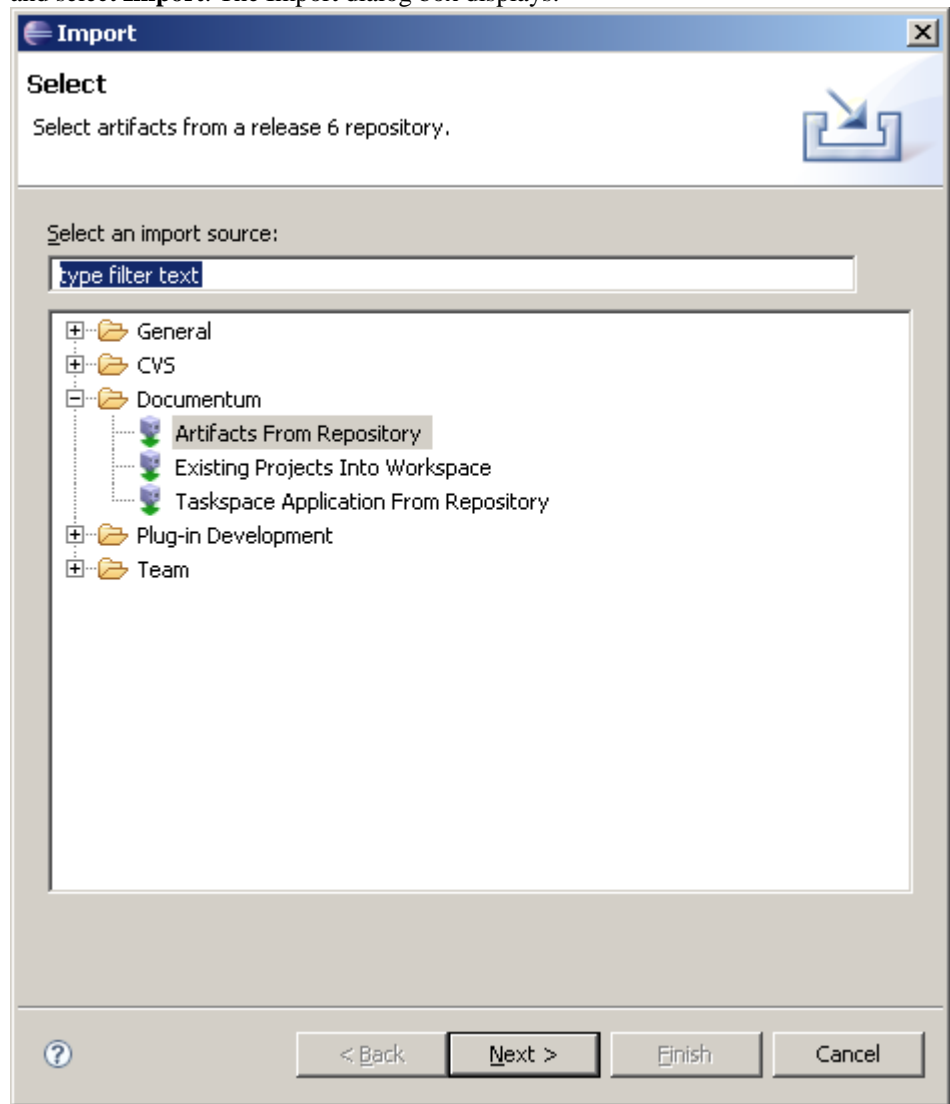


Figure 6 Selecting artifacts from a repository

8. Double-click the **Documentum** folder to expand it, and select **Artifacts from Repository**.

9. Click **Next**. The Project Selection and Repository Login page of the Import Artifacts from Repository dialog box displays.

Import Artifacts From Repository

Project Selection and Repository Login

Please provide the target project, repository, and login credentials.

Select or enter the project into which the artifact are imported:

Project name:

Select or enter the repository:

Repository name:

User name:

Password:

Domain:

Login

? < Back Next > Finish Cancel

Figure 7 Selecting target project and repository login

10. Provide the repository and login credentials.
11. Click **Login** to log in to the source repository. After the login process is completed, the **Next** button is enabled.

- Click **Next**. The Artifact Selection page of the Import Artifacts from Repository dialog box displays.

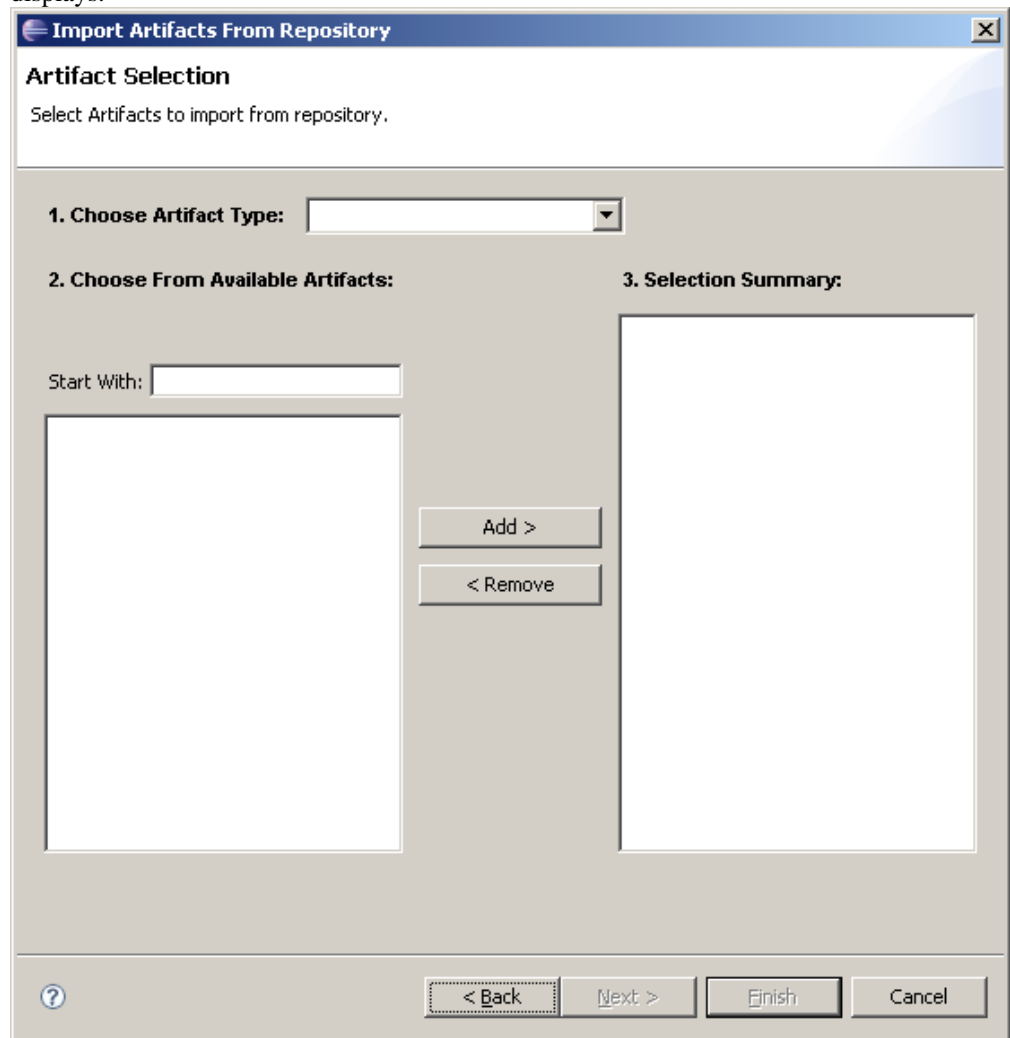


Figure 8 Import Artifacts from Repository dialog box

13. In the **Choose Artifact Type** list, select **SysObject**.

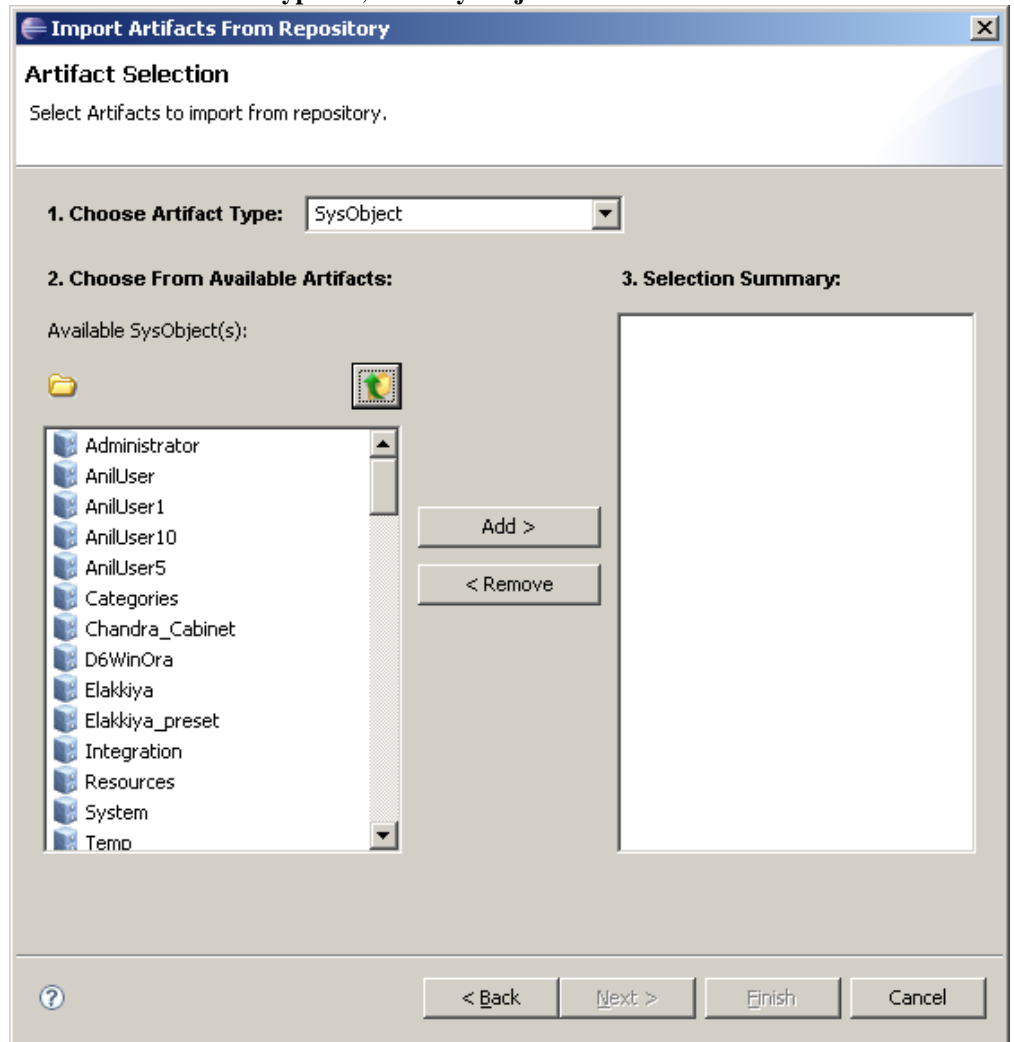



Figure 9 Selecting an artifact

14. Click  and navigate to the folder where Presets are stored. All Presets available in the selected folder are listed.

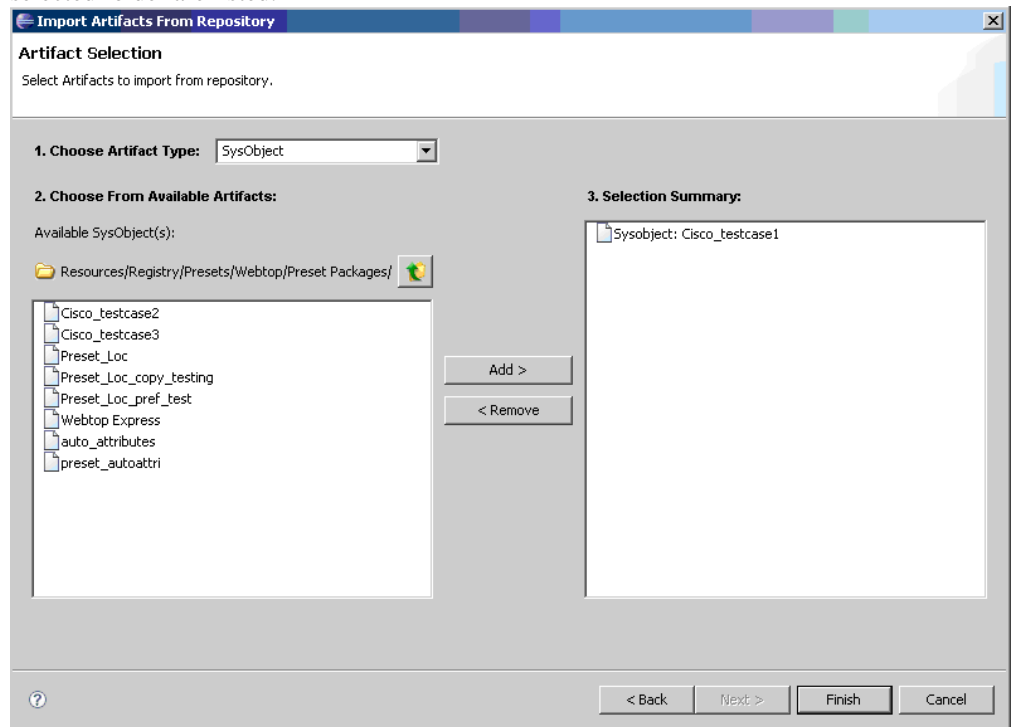


Figure 10 Viewing all the Presets available in a selected folder

15. Select the Presets to migrate, and click **Add**. All the Presets you add are listed in the **Selection Summary** list.

- Click **Finish**. The Preset you imported is listed in the **Sysobject** folder within the **Artifacts** folder in the Composer Navigator.

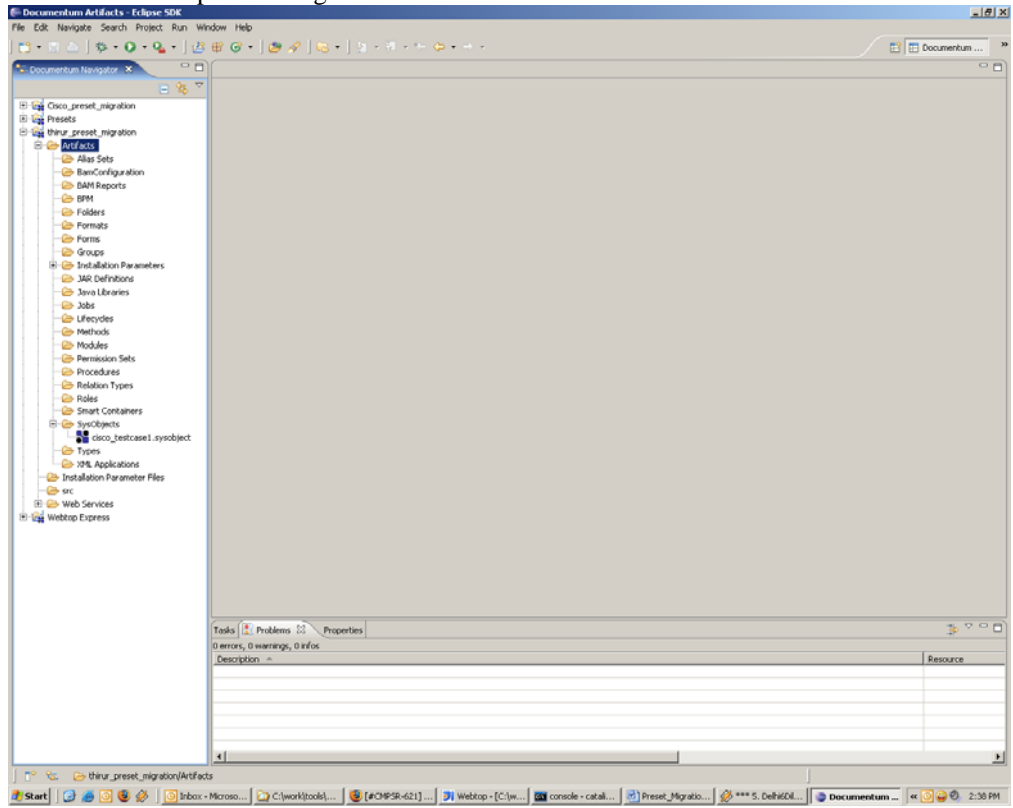


Figure 11 Viewing the imported Preset in Composer Navigator

- Right-click the Preset artifact you imported, and select the **Properties** option. The Properties dialog box for the selected artifact displays.

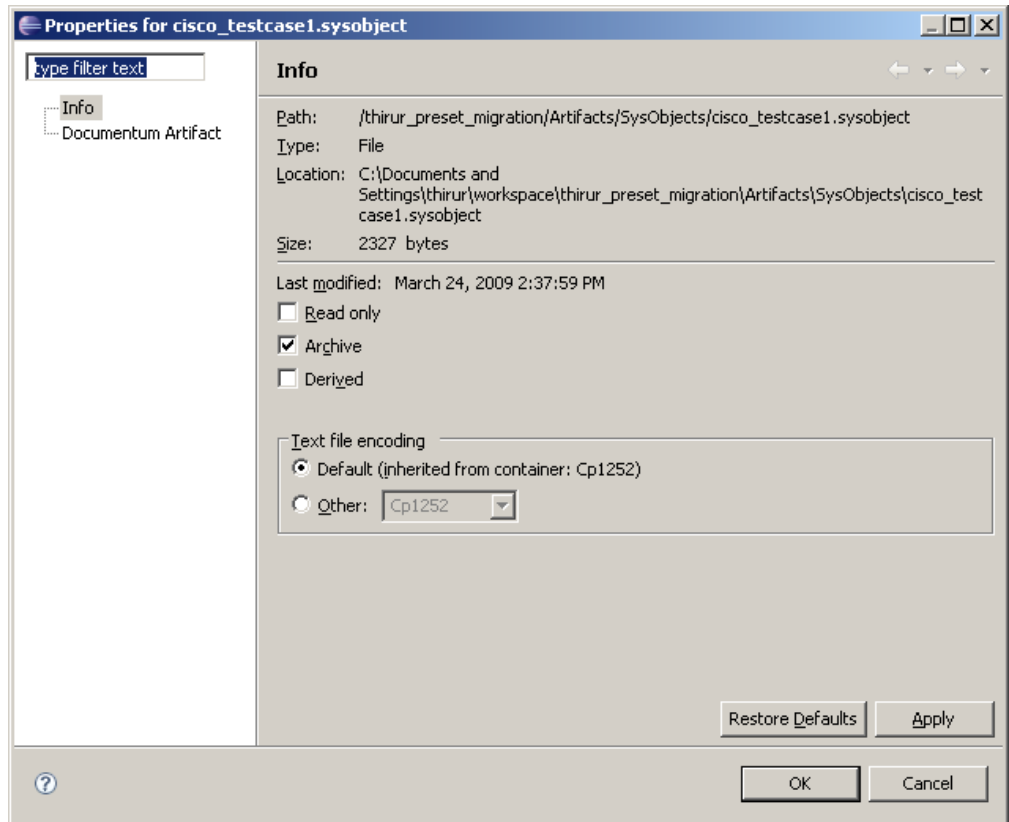


Figure 12 Properties dialog box for the selected artifact

18. In the left panel, select **Documentum Artifact**. The Documentum Artifact page displays.

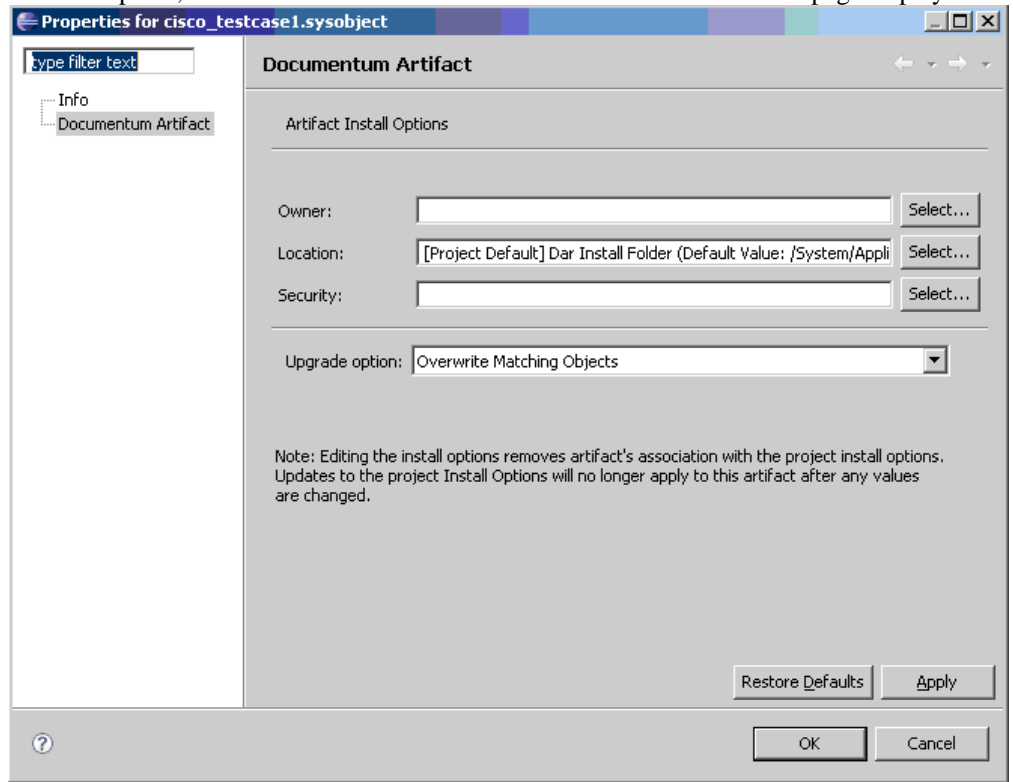


Figure 13 Documentum Artifact page

19. Set the **Owner** details by clicking **Select**. The Principal (User or Group) Installation Parameter dialog box displays.

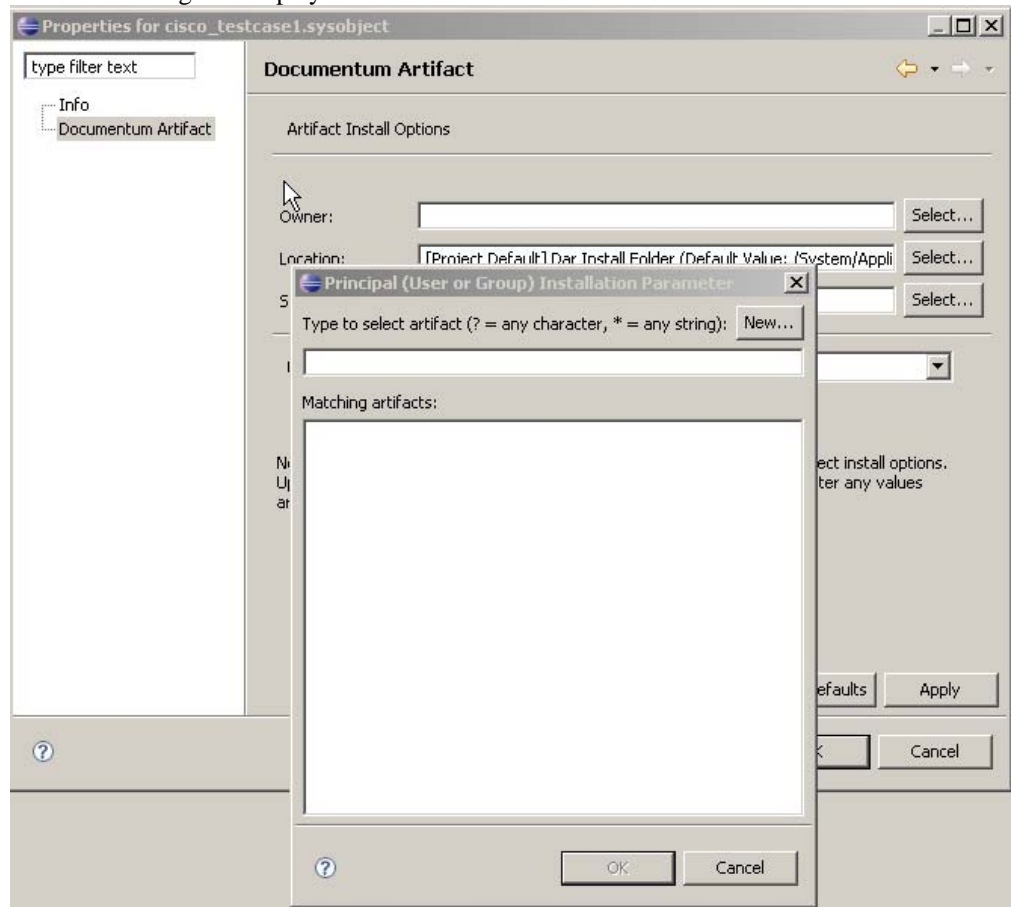


Figure 14 Principal (User or Group) Installation Parameter dialog box

20. Click **New**. The New Documentum Artifact – Name and Location wizard displays.

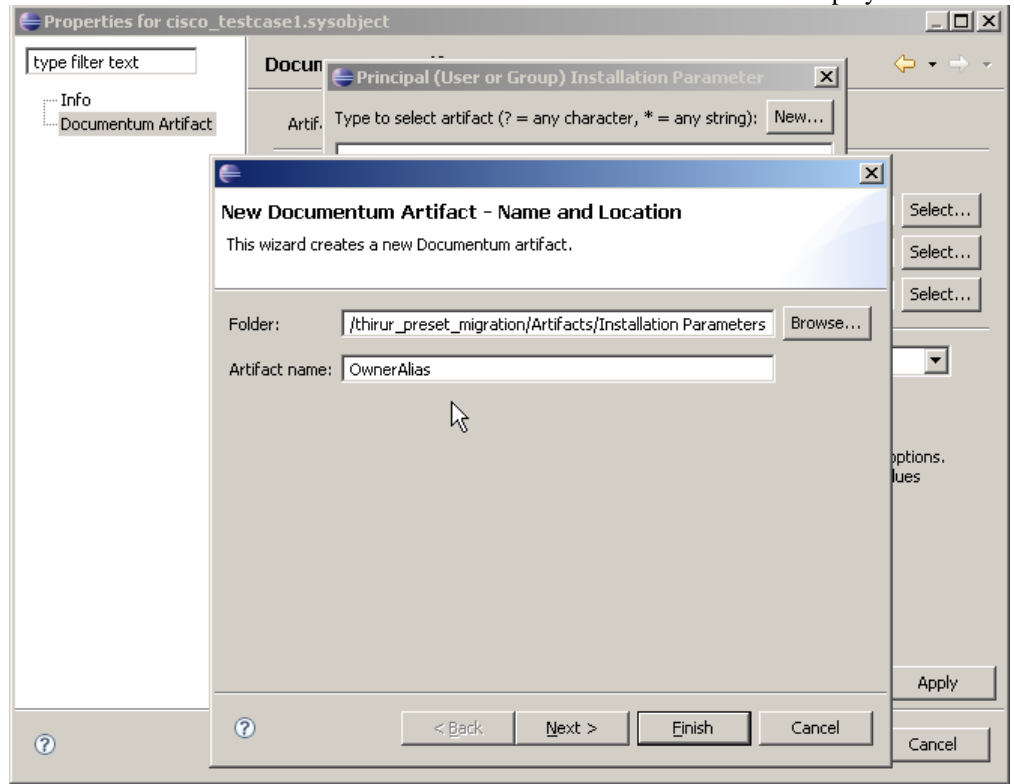


Figure 15 New Documentum Artifact – Name and Location wizard

21. In the **Artifact Name** field, enter **OwnerAlias** and click **Next**. The Installation Parameter Artifact page displays.

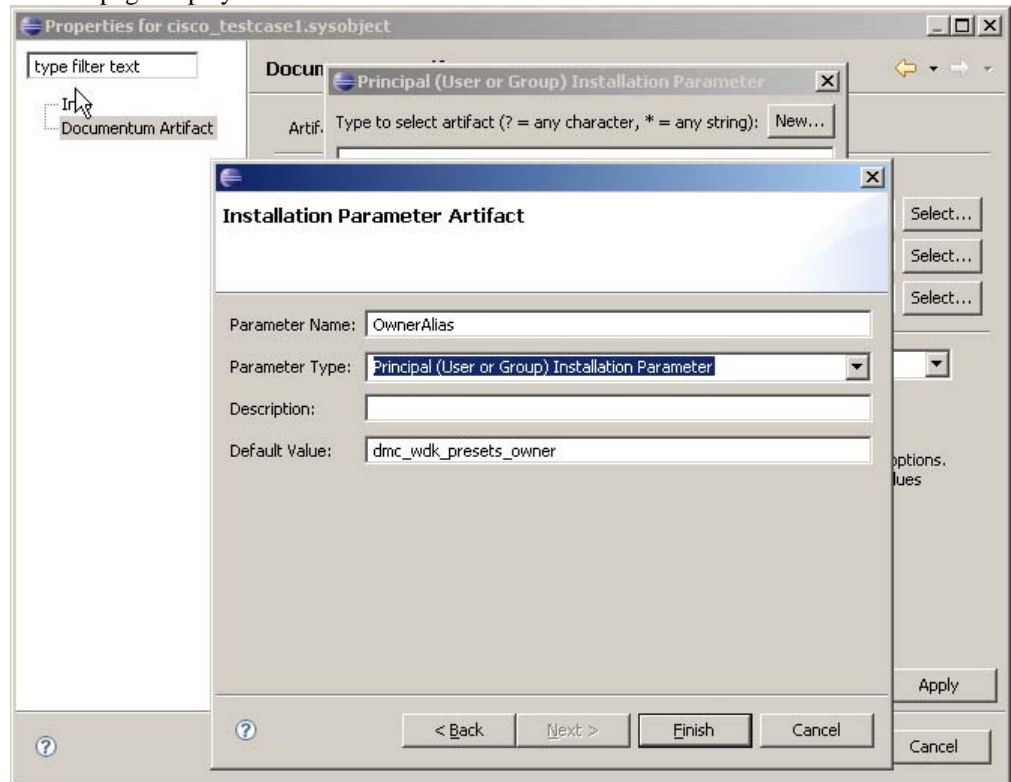


Figure 16 Installation Parameter Artifact page

22. In the **Default Value** field, enter **dmc_wdk_presets_owner** and click **Finish**.

23. Click **OK** in the Principal (User or Group) Installation Parameter dialog box.

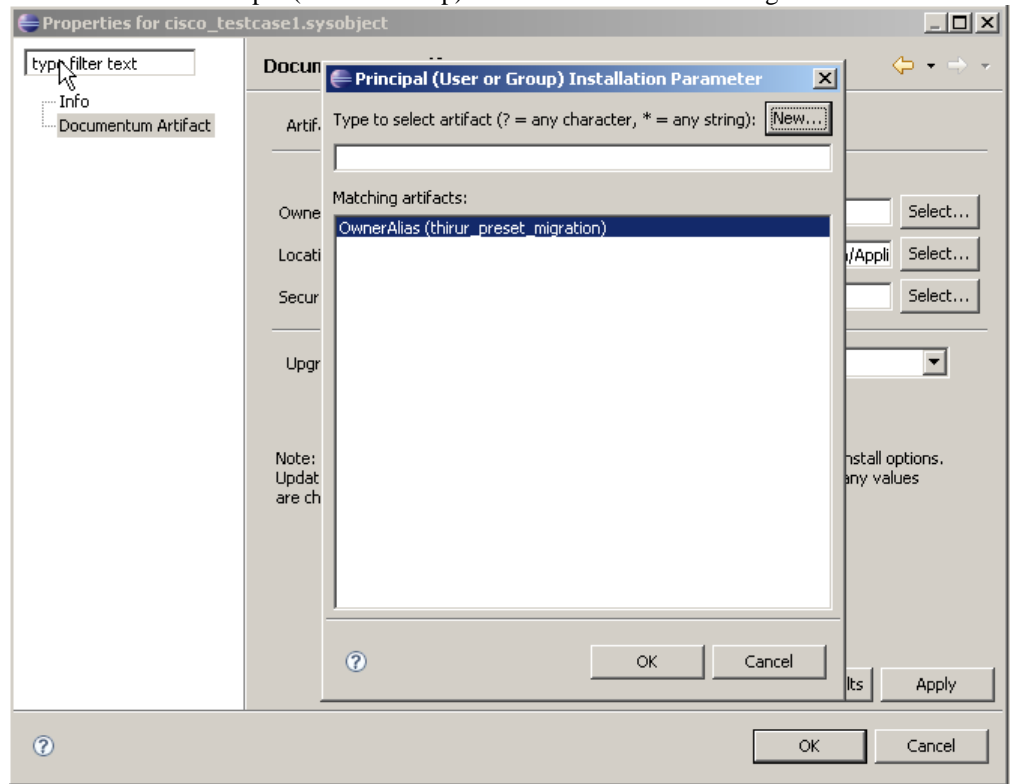


Figure 17 Principal (User or Group) Installation Parameter dialog box

24. Set the **Location** and **Security** details by clicking **Select** next to each of these fields, and repeat steps 21 through 24.

25. By default, the **Upgrade option** is set to **Overwrite Matching Objects**. After defining all details, the Documentum Artifact page appears as follows.

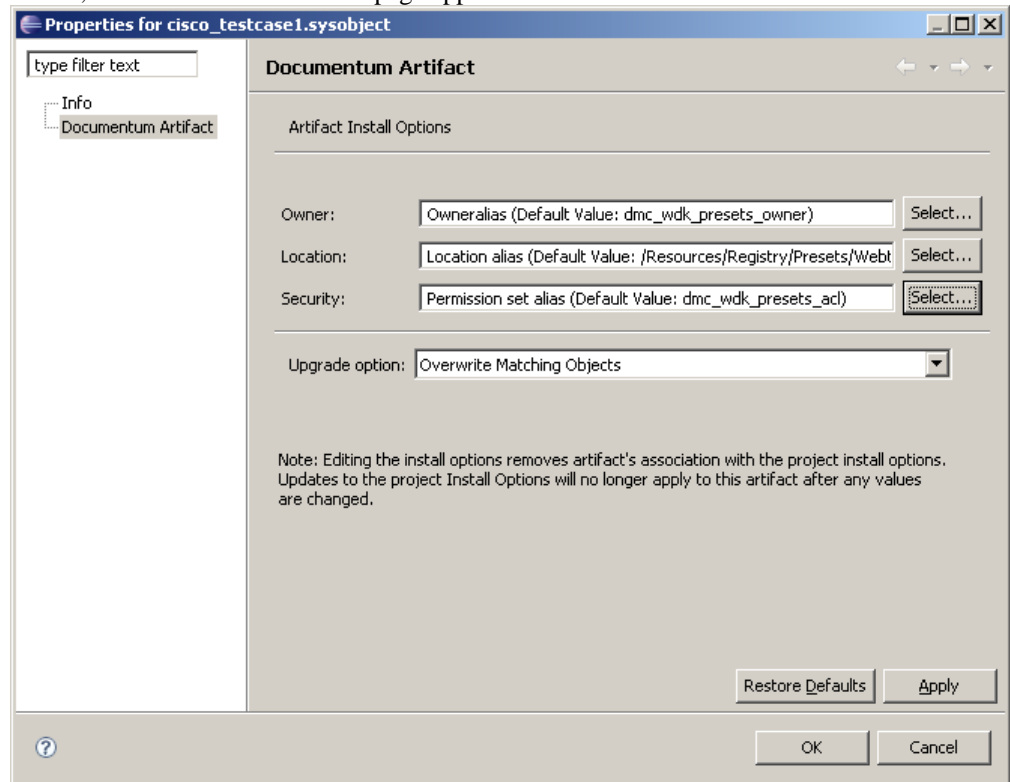


Figure 18 Documentum Artifact page

26. Click **Apply** to apply the Artifact Install Options.

27. Click **OK**. The Composer Navigator displays.

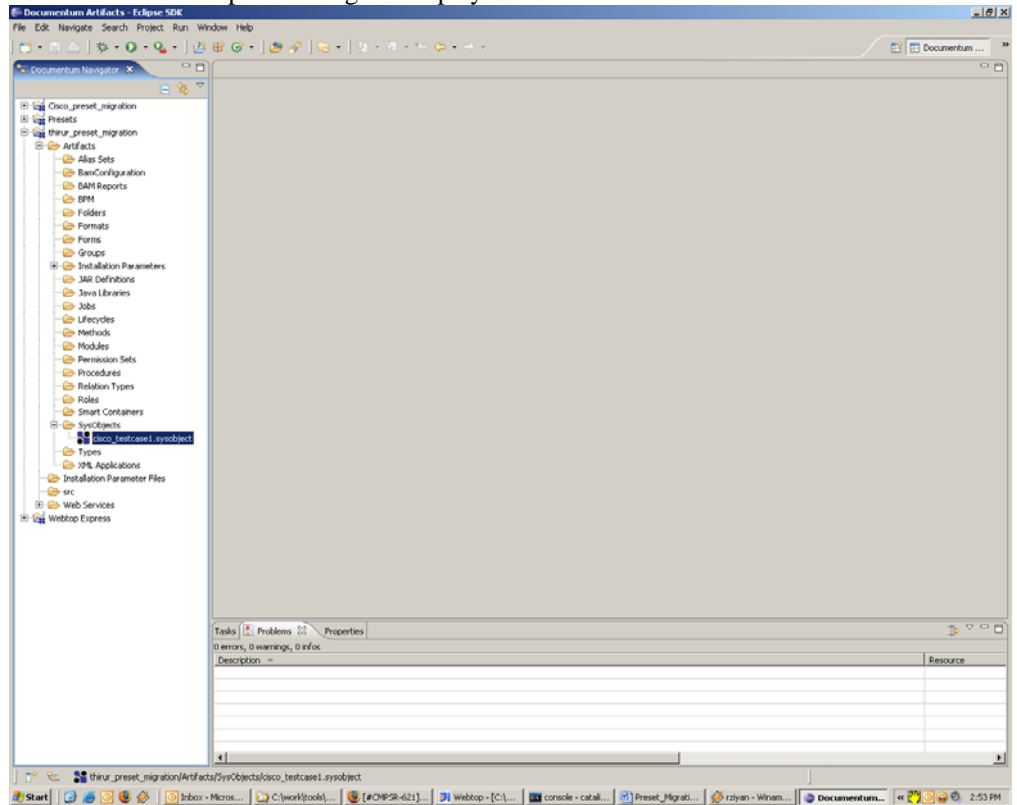


Figure 19 Composer Navigator

28. Build your new Composer project to create the DAR file by selecting **Project > Build Project**.

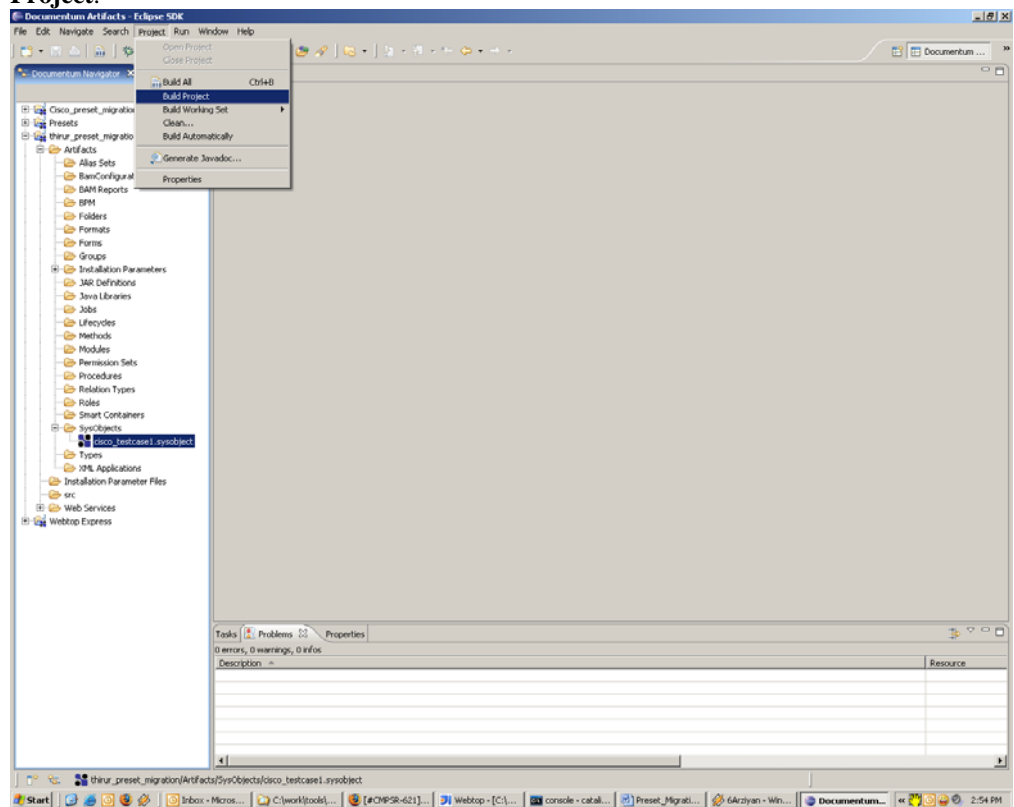


Figure 20 Building the new Composer project from Composer Navigator

29. Perform the following steps to install the project on the target repository:

- a. Right-click your Composer project, and select the **Install Documentum Project** option.

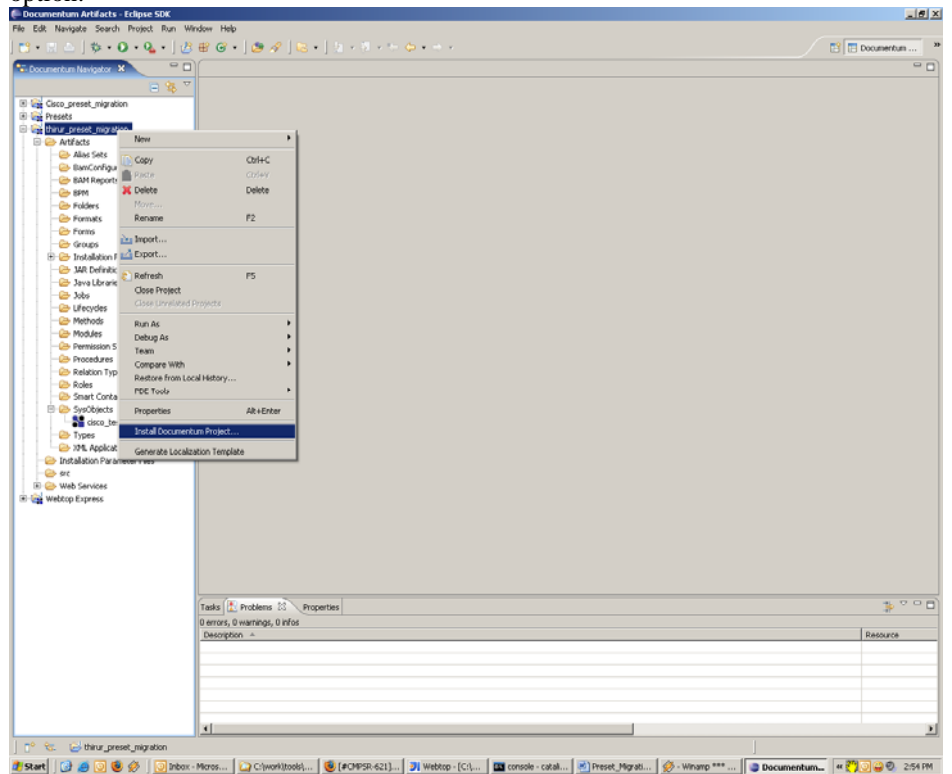
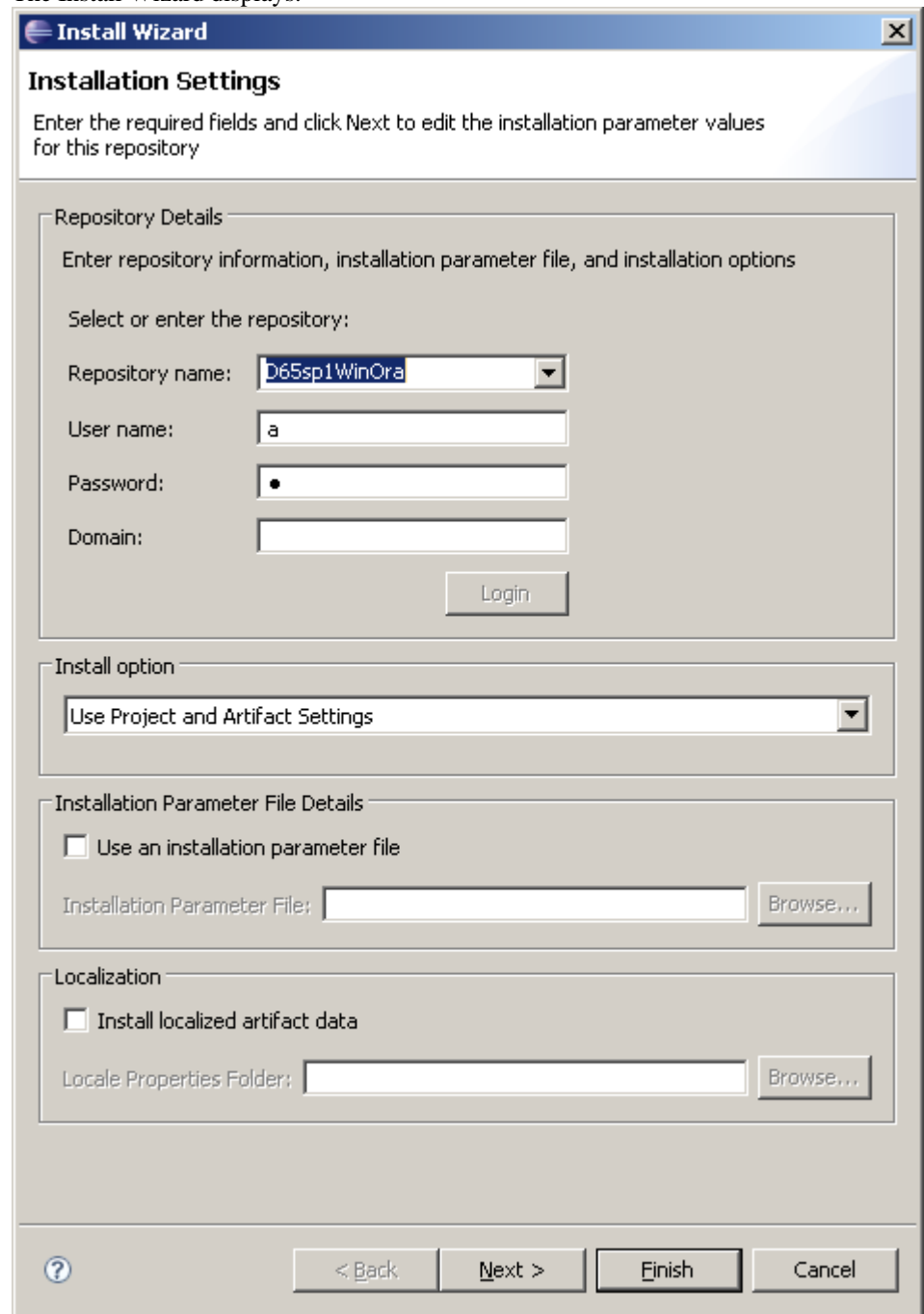


Figure 21 Installing the new project from Composer Navigator

The Install Wizard displays.



The screenshot shows the 'Install Wizard' dialog box with the 'Installation Settings' tab selected. The dialog is titled 'Install Wizard' and contains the following sections:

- Repository Details:** A section with the instruction 'Enter repository information, installation parameter file, and installation options'. It includes a dropdown menu for 'Repository name' (set to 'D65sp1WinOra'), text boxes for 'User name' (set to 'a'), 'Password' (masked with a dot), and 'Domain'. A 'Login' button is located at the bottom right of this section.
- Install option:** A dropdown menu set to 'Use Project and Artifact Settings'.
- Installation Parameter File Details:** A section with a checkbox 'Use an installation parameter file' (unchecked). Below it is a text box for 'Installation Parameter File' and a 'Browse...' button.
- Localization:** A section with a checkbox 'Install localized artifact data' (unchecked). Below it is a text box for 'Locale Properties Folder' and a 'Browse...' button.

At the bottom of the dialog, there is a help icon (question mark), and four buttons: '< Back', 'Next >', 'Finish', and 'Cancel'.

Figure 22 Defining installation settings in the Install Wizard

- b. Set the installation options required to log in to the target repository.
- c. Click **Login**.
- d. After you are logged in successfully, click **Finish**. All Presets you imported from the source repository are migrated to the target repository.

Verifying the Preset migration

You can perform the following tasks to verify whether the Preset migration was successfully completed.

To verify Preset migration

1. Log in to the target repository using Documentum Webtop.
2. In the **Administration** node, select the **Preset** node to view the Presets that you migrated.

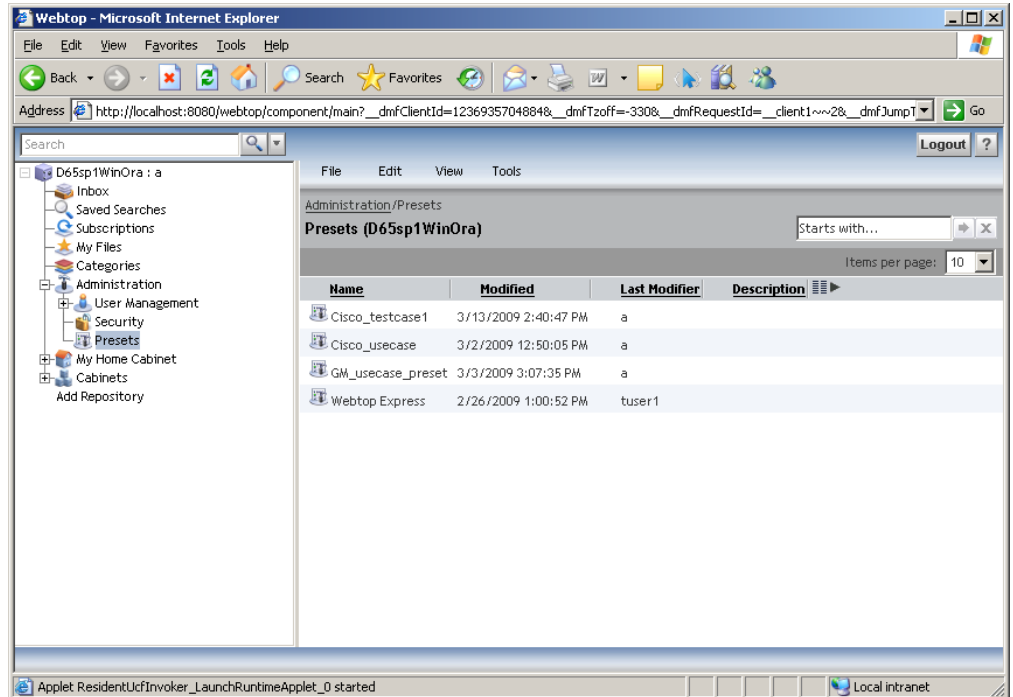


Figure 23 Viewing successfully migrated Presets in Documentum Webtop