

# EMC Ionix IP Performance Manager

## Part of the Ionix IT Operations Intelligence Family

### The Big Picture

- Reduces costs by automating root-cause and impact analysis of performance problems and eliminating rules writing
- Maximizes network performance by providing critical lead time to address network issues before they affect service delivery
- Gives you the flexibility to choose default polling policies and thresholds, or to define your own with intuitive on-screen commands
- Improves customer satisfaction by detecting performance issues before they become hard failures

## Ensuring top-level infrastructure performance

Availability of network-dependent applications and services is important—but it's not enough. To meet escalating productivity and usability demands, you need an intense focus on infrastructure performance to ensure high-quality service delivery and customer satisfaction.

EMC Ionix™ IP Performance Manager (formerly EMC Smarts® IP Performance Manager) analyzes the root cause of network performance issues in real time. Its proactive monitoring covers host/server resources including disk, file system, processor, and memory.

EMC Ionix IP Performance Manager warns you proactively of potential problems in the managed environment. It analyzes the root cause of network performance issues in real time and determines the impact of these problems on the rest of the infrastructure. Instant, accurate, and totally automated diagnosis of service-affecting Authentic Problems™ tells you exactly what to fix to keep your infrastructure operating at peak performance.

### IP Performance Manager performs these functions:

- Automatically and efficiently polls network elements only for relevant data needed to identify important exceptional conditions, and applies intelligent analysis to distill the polled data into meaningful information
- Leverages the results of IP Availability Manager to understand when managed elements are unreachable, and automatically disables polling for those elements until they are reachable again
- Automatically adapts to changes in the network environment, assigning appropriate polling and performance thresholds to newly discovered elements

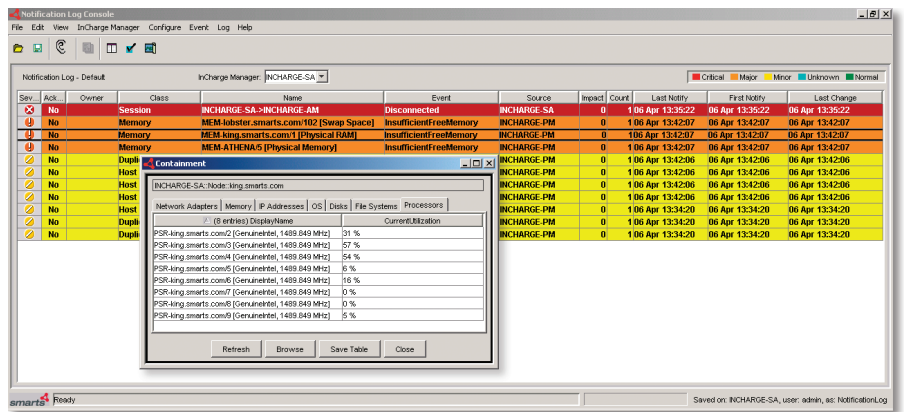
IP Performance Manager and IP Availability Manager combine realtime device fault management and end-to-end performance management across connected devices, delivering the unparalleled ability to manage the service delivery environment automatically and proactively.

### Examples of IP Performance Manager monitoring and analysis

IP Performance Manager reports two types of notifications: faults and exceptions. Exceptions are also referred to as aggregate events. Performance faults indicate abnormal conditions observed by IP Performance Manager. Examples of performance faults include:

- High error rate for a network adapter
- High utilization rate of a switch's backplane
- High buffer miss rate on a system's memory component

IP Performance Manager uses the detection of faults to diagnose exceptions. You can drill down on an exception notification to view the details about the faults that were used to diagnose the problem.



For example, IP Performance Manager generates a Resource Exception notification to indicate that a server has exhausted most of its processor or memory resources. When you receive a Resource Exception notification, you can drill down to view which of the following faults has been detected:

- High utilization of the processor
- Disk operationally down
- High utilization of the file system
- File system not available
- Insufficient free memory

IP Performance Manager generates a single exception of a given type per system, regardless of the number of faults that exist.

## Business features

- Gathers and analyzes network performance information in real time
- Pinpoints performance problems before devices fail
- Adapts automatically to network changes, eliminating the need for manual reconfiguration of polling policies

## Technical specifications

**System requirements:** EMC Ionix 6.2 (formerly EMC Smarts 6.2)

**Operating systems supported:** Solaris 8 and 9; HP-UX 11.00 and 11.11; Windows 2000 Server and Windows 2003 Server; and Red Hat Linux Advanced Server ES, AS, and WS 2.1

## About EMC

EMC Corporation is the world's leading developer and provider of information infrastructure technology and solutions that enable organizations of all sizes to transform the way they compete and create value from their information. Information about EMC's products and services can be found at [www.EMC.com](http://www.EMC.com).



**EMC Corporation**  
 Hopkinton  
 Massachusetts  
 01748-9103  
 1-508-435-1000  
 In North America 1-866-362-2700  
 In Europe +44 (0) 20 8758 6750  
[www.EMC.com](http://www.EMC.com)

### Take the next step

To learn more about how EMC solutions can positively impact your business and IT operations, contact your local EMC or EMC resource management sales representative, or visit our website at [www.EMC.com](http://www.EMC.com).