

EMC PROSPHERE

Improve the utilization, agility, and performance of your virtualized data center with end-to-end storage management

ESSENTIALS

- Built to meet the requirements of the cloud computing era
- Detailed capacity planning, reporting, and analysis to optimize investments in virtualization and tiered storage
- Provides an end-to-end view across the abstraction layers introduced by virtual server and storage technologies
- Monitors and analyzes performance from the physical or virtual host down through the storage layers
- Optimize investments in storage through the use of FAST VP and trend analysis to monitor impact of FAST decisions
- Tracks and validates compliance with configuration best practices and E-Lab interoperability guidelines to ensure consistent service delivery
- Lowers capital and operational costs through agent-less discovery, virtual appliance deployment, and a more efficient architecture

“ProSphere’s user interface is clean, simple to navigate, and relevant. You experience this at first log on with a dashboard that presents you with a Storage Administrator’s most important information at his finger tips.”

Sarel Theron
Storage Administrator
Internet Solutions

Many organizations have made good progress toward gaining better utilization of their infrastructure through virtualization of compute and storage resources. This continues to be an area of focus and concern for IT organizations. A recent study by IDC stated that in 2011 the amount of information created and replicated will surpass 1.8 zettabytes growing by a factor of 9 in just five years. Metadata is growing even faster; in the next five years it will grow by a factor of 8 while IT staff will only grow slightly. The amount of storage coming under management is mind boggling.

Containing costs, managing storage growth, and meeting service-level expectations in highly virtualized environments requires new processes and tools. Server virtualization and virtual storage technologies like Virtual Provisioning™ and Fully Automated Storage Tiering add layers of abstraction that improve efficiency and performance but can also make it difficult to understand and manage the relationships between applications and the supporting storage services. Many IT organizations today have multiple data centers, and with new hybrid cloud computing models, data can be spread across a mix of both private and public cloud resources increasing the difficulty in seeing and managing data wherever it resides. The rapid pace of change in technology makes it hard for organizations to take advantage of the benefits of these new technologies while maintaining service levels and controlling costs. In these challenging economic times, IT organizations are looking for management solutions with low cost of ownership and rapid return on investment. Finally, organizations are increasingly looking to deliver infrastructure as a service with consistent service levels at the optimal price-performance ratio to meet business objectives.

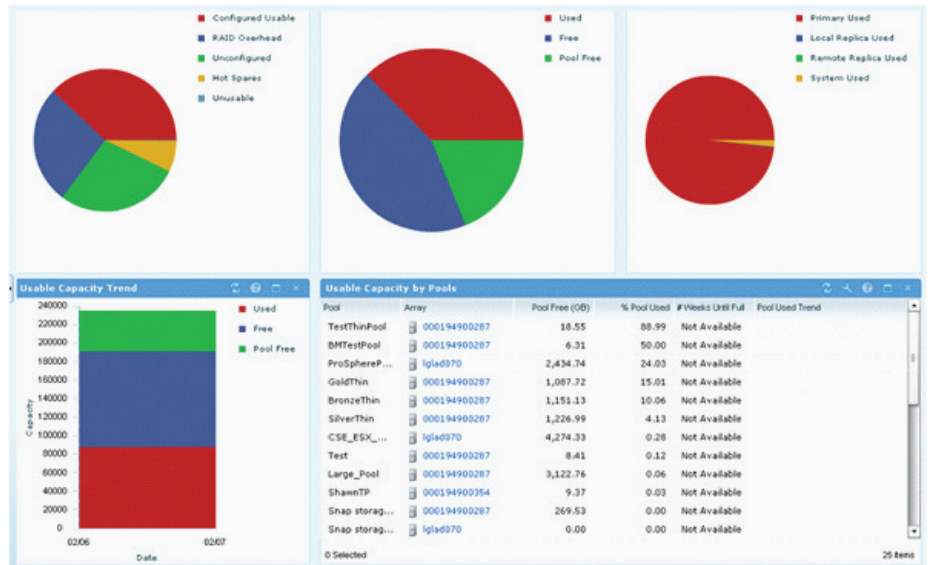
EMC PROSPHERE: END-TO-END STORAGE MANAGEMENT FOR THE CLOUD

The new EMC® storage management family is built to meet the requirements of the cloud computing era by providing you with an end-to-end view across all of the abstraction layers introduced by server virtualization and virtual storage technologies. It is architected to keep pace with the rate of technology change, and is easy to deploy and manage.

CAPACITY MONITORING AND ANALYSIS

In the virtual world it is difficult to know where your resources are, how they are utilized, and when they will be become over provisioned. ProSphere’s federated architecture offers end-to-end capacity views across the cloud while improving administrator productivity by offering an easy to navigate dashboard that displays storage resource allocation, usage, and trending analysis that optimize investments in virtualization and tiered storage. ProSphere’s

tight integration with VMware® and EMC storage technologies like FAST VP offer the best utilization of resources to optimize application performance and meet business SLAs while improving price performance ratios and overall time to value.



PERFORMANCE MONITORING AND ANALYSIS

EMC ProSphere™ will monitor storage performance across the virtual infrastructure. Threshold alerts will aid in proactive identification of performance issues to maintain service levels. An Internet like search function will quickly locate hosts or other objects and display an end-to-end view of performance across all component relationship dependencies. As you analyze storage paths, key performance indicators with historical perspectives help quickly identify performance trends to optimize performance or isolate bottlenecks to resolve issues quickly.



EMC STORAGE CONFIGURATION ADVISOR

EMC Storage Configuration Advisor is an optional module in the ProSphere family. It performs near realtime change tracking and best practice validation from the virtual guest down through the storage layers to ensure consistent compliance with configuration best practices. It offers extensive reporting and analytics to support and mature change planning processes. It will also download the EMC Support Matrix and validate your environment's compliance with EMC E-Lab™ recommendations. This provides the peace of mind in knowing the configuration of your SAN has been thoroughly evaluated by EMC.

MULTISITE MANAGEMENT

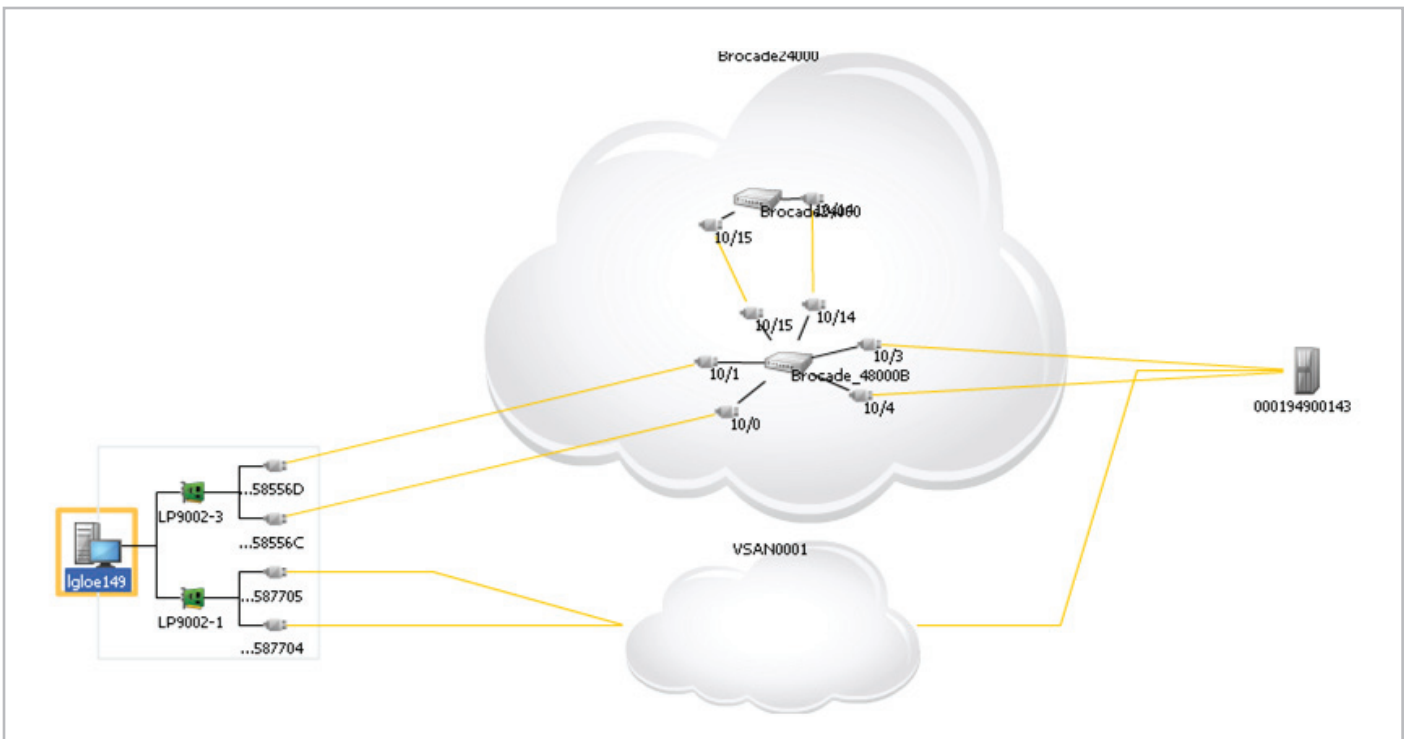
ProSphere's federated and highly scalable architecture allows you to view and manage all of your storage investments from a common console. With ProSphere, you can quickly search across multiple data center sites to find and analyze objects no matter where they are physically.

VISIBILITY ACROSS VIRTUALIZATION LAYERS

ProSphere's user interface is designed to improve productivity in large complex environments. A built-in search function locates objects and displays an end-to-end view in just a few clicks of the mouse. With another click, you quickly drill down to see more details on selected objects. A bird's eye view pane provides the visual perspective to know where you are at all times as you analyze your environment. With ProSphere, you gain a visual understanding of the complex relationships that exist in large, highly virtualized environments to improve service levels and increase productivity.

MANAGE STORAGE AS A SERVICE

ProSphere helps you manage storage as a service by monitoring and analyzing service levels from the host down through the storage layers. Historical performance trends can be analyzed to identify when more cost-effective or higher performing storage should be applied. ProSphere's capacity monitoring and analysis capabilities enable IT departments to identify line of business storage usage across federated data centers, and generate custom reports based on storage allocated, used, available, and consumption trends. With EMC Storage Configuration Advisor, you can track changes and monitor compliance with configuration best practices to ensure consistent service delivery. Combining the end-to-end monitoring and analysis capabilities of ProSphere with FAST VP allows you to take a policy-based approach toward delivering storage as a service. This helps to ensure that you deliver consistent service levels at the optimal price-performance ratio to meet business objectives.



LOWER COST OF OWNERSHIP

ProSphere lowers the cost of ownership of your storage management application. Agent-less or passive discovery eliminates the burden of deploying and managing host agents. ProSphere is also fast and easy to deploy. The virtual appliance used to install ProSphere can be deployed in under an hour and many storage environments can be discovered in

under a day. An auto update function automates the process of downloading and installing new product enhancements. ProSphere's highly scalable architecture provides superior performance with less hardware.

EMC GLOBAL SERVICES

ProSphere has been architected to be customer installable and is simply deployed as a self contained vApp on a virtual server in the customer environment. If further assistance is needed, EMC service professionals will work closely with your staff to implement ProSphere in your environment, helping to speed deployment and accelerate the time to value of your software investment. EMC can also assist with the migration of historical performance data from existing Ionix™ ControlCenter installations into the ProSphere application.

EMC Global Services provide the strategic guidance and technology expertise organizations need to address their business and information infrastructure challenges, and derive the maximum value from their information assets and investments. We are committed to exceptional total customer experience through service excellence. Our 15,000+ professional and support service experts worldwide, plus a global network of alliances and partners, leverage proven methodologies, industry best practices, experience, and knowledge derived from EMC's 30-year information-centric heritage to address the full spectrum of customer needs across the information lifecycle—strategize, advise, architect, implement, manage, and support.

CONTACT US

To learn more about how EMC products, services, and solutions can help solve your business and IT challenges, contact your local representative or authorized reseller, or visit us at www.EMC.com.

EMC², EMC, E-Lab, Ionix, ProSphere, and the EMC logo are registered trademarks or trademarks of EMC Corporation in the United States and other countries. VMware is a registered trademark VMware, Inc. in the United States and/or other jurisdictions. All other trademarks used herein are the property of their respective owners. © Copyright 2012 EMC Corporation. All rights reserved. Published in the USA. 02/12 Data Sheet H8810.2