

# EMC APPLICATIONXTENDER SHAREPOINT SERVICES

## Complement Microsoft SharePoint with advanced document management capabilities

### ESSENTIALS

- Microsoft SharePoint 2010 users can stay within their SharePoint interface and seamlessly access documents stored in ApplicationXtender
- Simultaneously search both SharePoint and ApplicationXtender from the SharePoint interface
- Move content from SharePoint to ApplicationXtender for workflow or archiving purposes
- Move content from ApplicationXtender to SharePoint to facilitate collaboration

Many organizations use Microsoft SharePoint to enable effective collaboration and ensure document accessibility. However, SharePoint is not necessarily the ideal solution for storing all document types.

For organizations with high document volumes and fixed document types, EMC® ApplicationXtender® provides capabilities not available in a traditional SharePoint environment. ApplicationXtender SharePoint Services combines the ease of use and complete document access provided by SharePoint with the strong document management and workflow capabilities found in ApplicationXtender, which now supports Microsoft SharePoint 2010.

### UNIVERSAL CONTENT ACCESS

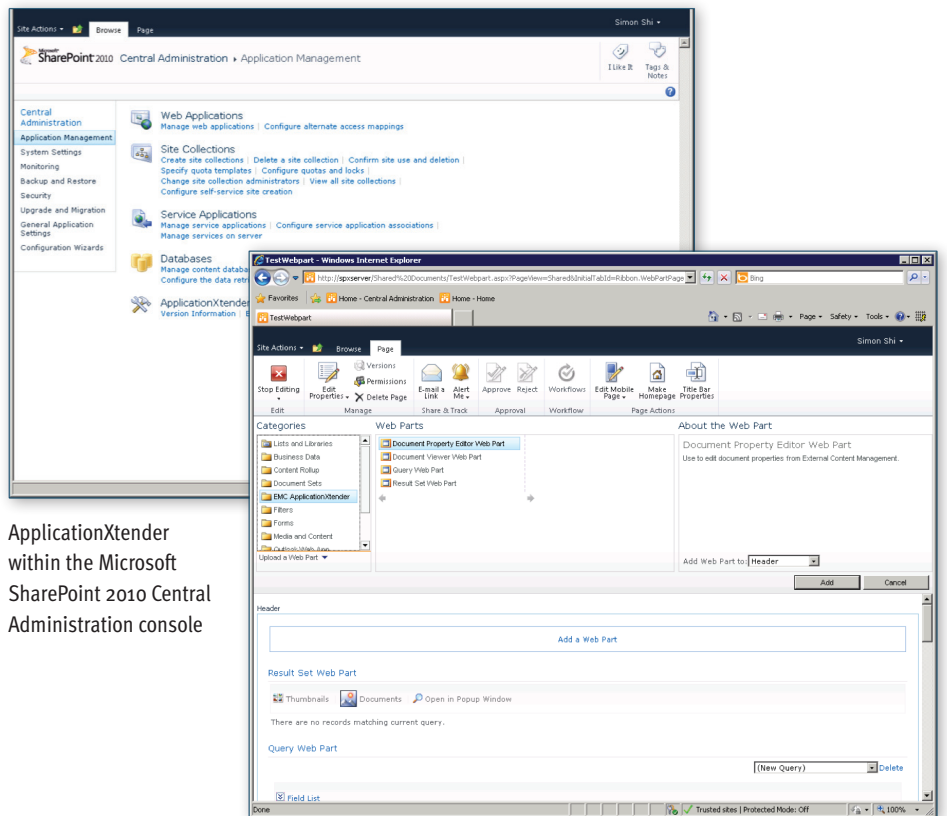
ApplicationXtender SharePoint Services gives SharePoint applications complete visibility into the documents stored within ApplicationXtender repositories. Without having to leave the SharePoint interface, users can query both SharePoint and ApplicationXtender simultaneously to access the appropriate documents and images. Search results are merged and appear in a single page to ensure quick discovery of the most relevant information.

With complete access to all ApplicationXtender documents, SharePoint users can leverage and quickly access all business-critical documents, no matter where they are stored. SharePoint applications can aggregate content from both SharePoint and ApplicationXtender, while documents stored within ApplicationXtender continue to take advantage of its underlying document management capabilities.

When documents within ApplicationXtender must be viewed or accessed, SharePoint users can leverage ApplicationXtender viewing tools to see the content directly in the SharePoint browser-based user interface. In addition to downloading these documents for local use, SharePoint users can view these documents within the browser, redact and annotate images, scan documents, view thumbnails of multiple page documents, or zoom into specific areas of a single page.

### COMPLETE DOCUMENT MANAGEMENT

While SharePoint provides ubiquitous access for users throughout an organization, its architecture is tailored for collaboration, not large-scale document management. ApplicationXtender SharePoint Services enables you to leverage ApplicationXtender strengths in document management without sacrificing easy access from within SharePoint.



ApplicationXtender within the Microsoft SharePoint 2010 Central Administration console

ApplicationXtender web part for Microsoft SharePoint 2010

ApplicationXtender capabilities include:

- Security
- Support for high document volumes
- Workflow
- Retention management
- Integration with EMC Centera®
- SharePoint content archiving

In addition to providing tools to view content within SharePoint, ApplicationXtender SharePoint Services also enables you to easily move content from SharePoint to ApplicationXtender repositories to take advantage of critical document management capabilities. The integration gives you maximum flexibility for archiving your SharePoint content. ApplicationXtender can move content on demand or on a pre-scheduled basis. This process can preserve all SharePoint metadata while providing continued access to content within SharePoint.

## CONTACT US

To learn more about integrated imaging and document management with EMC Documentum ApplicationXtender, contact your local authorized value-added reseller, visit [www.EMC.com](http://www.EMC.com) or call 800.607.9546 (outside the U.S.: +1.925.600.5802).

EMC, ApplicationXtender, Centera, and where information lives are registered trademarks or trademarks of EMC Corporation in the United States and other countries. All other trademarks used herein are the property of their respective owners. © Copyright 2010 EMC Corporation. All rights reserved. Published in the USA. 1/10 Data Sheet H4769