

EMC Documentum Content Services for SAP Portal—iViews

Extend your SAP[®] portal investment with content management

The Big Picture

- Link content with SAP business objects to accelerate business processes
- Employ flexible document access and retrieval
- Manage content with services such as view, edit, copy, and more
- Streamline access to archived SAP content
- Leverage additional Content Services for SAP

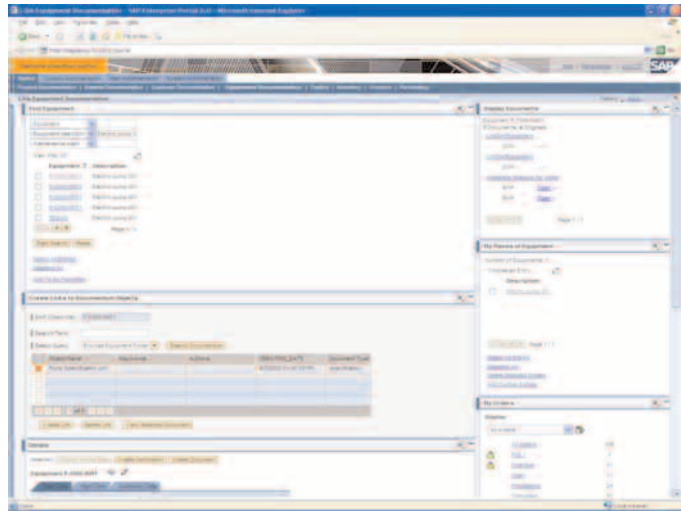
EMC[®] Documentum[®] Content Services for SAP[®] Portal is a group of products that delivers content management services to portal users from within their portal applications. Documentum iViews are the latest addition to this group. iViews integrate seamlessly with the SAP architecture. Using Documentum iViews, portal users can improve the speed and quality of SAP business processes while creating, accessing, and managing the full range of content used to design, manufacture, market, maintain, and sell products and services.

Documentum iViews are compatible with SAP Portal 6.0 and fully integrated with the Documentum content management platform and SAP's single sign-on (SSO) mechanism. iViews deliver:

- Flexible search options
- Powerful content linking capabilities
- Role-based deployment
- Multiple repository browse and search
- Support for multiple content types such as text, compound documents, and rich media
- Content property and security management

Accelerated business processes

With Content Services for SAP Portal, users can search for, file, store, and manage business content directly from their desktops, saving time and reducing costs. iViews enable users to create, link, access, and manage Documentum content within the context of SAP business objects. For example, plant maintenance personnel can access maintenance documents related to SAP maintenance assets. Or, finance auditors can view historical billing statements linked to SAP vendor records. Flexible and canned search and link procedures support this capability.



iViews

Flexible access and retrieval

In order to streamline their business processes, SAP portal users must be able to access supporting content in flexible ways. Some may need to execute ad-hoc queries across the enterprise repository. Others may want to execute canned DQL queries based upon supplied search criteria. Users may also expect that a content view is already in the context of its “parent” SAP business object, such as a record or transaction. The Search iView allows users to execute a variety of ad-hoc and canned queries in support of different user scenarios, profiles, and SAP business contexts. It enables free-text or attribute-based searching of supporting Documentum content. Queries can be created and reused to support specific business processes—financial, HR, plant maintenance, customer care, and others.

Powerful linking options

Link iView can be used in conjunction with Search iView to create permanent associations between specific SAP business objects and their supporting Documentum content. Link iView links SAP business objects (for example, transactions, records, etc.) to underlying content such as folders, document packages, and others. Once linked, content can be easily retrieved and managed, directly alongside its SAP business object. A variety of link types are supported. For example, a flexible query-based link may utilize a complex query to retrieve content based upon specific criteria, which might include content versions, formats, and other attributes. With a query-based link using a vendor ID as the search criteria, a financial analyst can retrieve all versions of a vendor contract, along with archived correspondence for a certain time period. Other link options include specific content links that use a method similar to a foreign-key. With a specific content link, the analyst can associate a single version of a vendor contract to the SAP object, for example, a vendor record.

Enhanced content-enabled SAP portal applications with Repository Manager

The iViews package includes Repository Manager, part of the Documentum Content Services for SAP Portal product group. It allows portal users to interact with their view of supporting documentation and utilize content management services, such as view, edit, copy, move, rename, delete, and send-to. Repository Manager also enables more complex tasks including:

- Browse or search using full-text or parameter-based queries, in order to identify or consolidate reference documents
- Modify and version-control content, using appropriate editing or authoring applications
- Initiate simple or complex content workflows, by interacting directly with the content, such as enabling approval cycles or retention policies
- Create and manage complex custom Documentum document types and custom properties using appropriate authoring applications

SAP portal and portal-enabled applications, such as mySAP™ ERP, PLM, SCM, and CRM, have strong content management requirements. Since Search iView, Link iView, and Repository Manager are based upon the SAP NetWeaver® framework, they can be used with mySAP applications or custom WebDynPro applications, which are also based upon the SAP portal.

Streamlined access to archived SAP reports and documents

SAP archiving for compliance, performance, and storage management purposes is becoming an important objective for many companies. Archived documents and reports are valuable intellectual property and often need to be accessed by a broad user community. Today, companies can archive and manage mission-critical SAP reports, files, and business documents using EMC Archive Services for SAP and access them through iViews and Repository Manager. Documentum also enables descriptive data to be replicated from SAP so that archived material can be properly classified for retention and storage management. Using these attributes, archived documents can be accessed via iViews and Repository Manager within the context of their specific business processes.

Combine Documentum products and services for even more robust SAP content management

If you already use Documentum to manage your enterprise content, you can extend those content management capabilities across your entire SAP portal user community. You can:

- Integrate Documentum-to-SAP workflow using Content Services for SAP and Documentum business process management
- Transform SAP native formats into platform-agnostic formats such as PDF, HTML, and ASCII using Documentum External Viewing Services for SAP
- Apply retention policies to SAP content with Documentum Retention Policy Services
- Enforce increased security for SAP content with Documentum Trusted Content Services
- Leverage a tiered EMC storage infrastructure with Documentum Content Storage Services

Take the next step

As the leading enterprise content management platform, Documentum extends your investment in SAP, enabling business partners and employees across your enterprise to harness the information in your SAP documents. To learn more about iViews and the full range of Documentum Content Services for SAP, visit us online at <http://software.emc.com>



EMC Corporation
176 South Street
Hopkinton, MA 01748
1-508-435-1000
In North America 1-866-464-7381

EMC², EMC, and where information lives are registered trademarks of EMC Corporation. Documentum is a registered trademark of EMC Corporation. SAP, mySAP and SAP NetWeaver are trademarks or registered trademarks of SAP AG in Germany and in several other countries.

© Copyright 2006 EMC Corporation.
All rights reserved. Published in the USA. 8/06

Data Sheet
S11490806V2