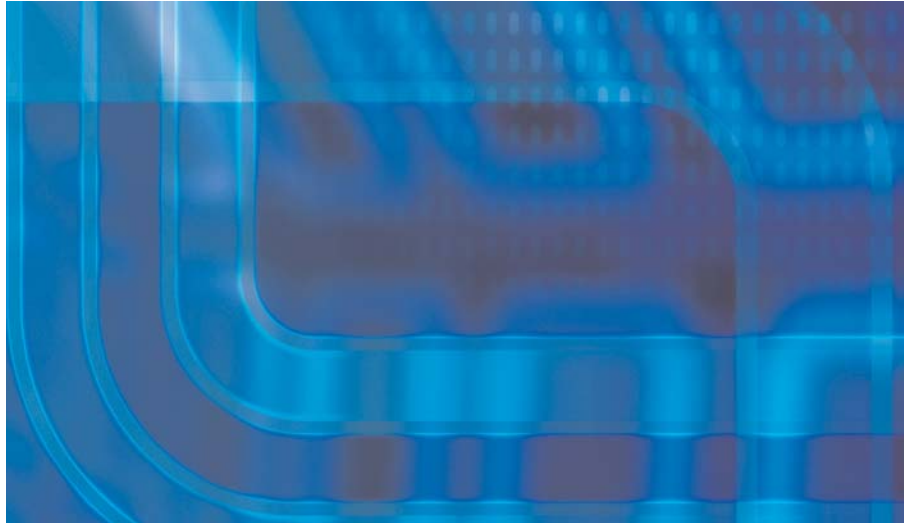


EMC Open Replicator for Symmetrix



Platform-independent replication for data mobility, remote vaulting, and migration

The Big Picture Platform-independent information replication to or from Symmetrix DMX systems

- Fast, simple, open
 - Cost-effective data mobility, remote vaulting, and data migration
 - Perform online migrations from any qualified storage array to Symmetrix DMX with minimal disruption to host applications
 - Push any live source Symmetrix DMX volume, with incremental updates, to a target volume on any qualified storage array
 - Copy from source volumes on any qualified remote array to a Symmetrix DMX volume
-

EMC Open Replicator for Symmetrix

EMC Open Replicator for Symmetrix® rapidly copies live or BCV-based (business continuance volume) data between EMC Symmetrix, EMC CLARiiON®, and qualified third-party storage systems over existing SAN infrastructures. EMC Open Replicator for Symmetrix enables high-speed data mobility, migration, and remote data vaulting between Symmetrix DMX™ and any qualified storage system. It supports full and incremental copy capabilities, and it has no impact on host server cycles or LAN/WAN bandwidth.

Symmetrix EMC Open Replicator for Symmetrix delivers:

- **Unmatched functionality:** Platform-independent replication for data mobility, remote vaulting, and migration
- **Low TCO:** Push or pull data from a Symmetrix DMX array to existing storage¹ over existing SAN/WAN environments
- **Consistency support:** Coordinated point-in-time copy creation across multiple sets of data and systems enhances enterprise-wide application restartability
- **Unprecedented flexibility:**
 - Perform online migrations from any qualified storage to Symmetrix DMX with minimal disruption to host applications
 - Distribute up to 16 copies of a source Symmetrix DMX volume with incremental update capabilities
 - Remotely copy up to 512 volumes concurrently
 - Push any live source Symmetrix DMX volume to a target volume on any qualified storage array
 - Copy from source volumes on any qualified array to a Symmetrix DMX volume

¹ Pending specific EMC E-Lab™ qualification

The right solution for the job

Only EMC offers a broad range of both remote replication and data mobility, distribution, and migration products to meet your varying service levels.

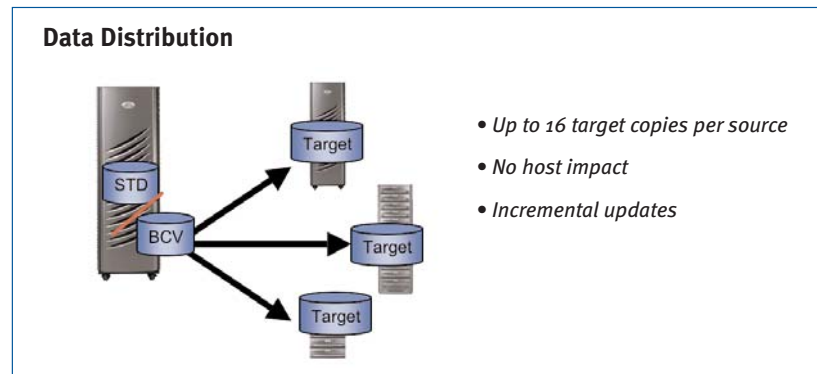
For applications which require the absolute highest levels of protection and availability, the Symmetrix Remote Data Facility (SRDF®) family of remote replication products is the hands down choice in the industry, providing unprecedented levels of performance and functionality across a broad range of needs.

For applications and environments where economics and infrastructure flexibility are more important than recovery-point objective (RPO) and recovery-time objective (RTO) concerns, EMC Open Replicator for Symmetrix offers a powerful and cost-effective alternative to meet your needs.

With the Symmetrix DMX, you gain the powerful advantage of being able to not only pick the right choice for your particular application, you can blend your choice of solutions among applications, using the SRDF family for some and EMC Open Replicator for Symmetrix for others. And when your needs change, your infrastructure investments are protected—all modes of operation can occur simultaneously and moving from one mode to another is a straightforward process. All modes can run concurrently on the same Symmetrix DMX system, or across Symmetrix DMX systems, and can be managed through a common set of tools.

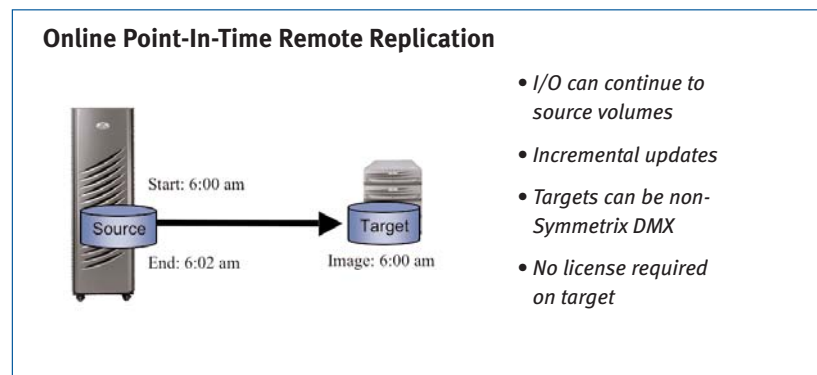
Data distribution and mobility

With EMC Open Replicator for Symmetrix, you can distribute up to 16 copies of a single source volume to remote storage systems while still maintaining the ability to push incremental updates as required. This makes content distribution a simple and routine process.



Online point-in-time replication to non-Symmetrix DMX storage

When faced with the dilemma of making consistent copies of multiple online data volumes and sending them to a remote system, most solutions require you to use a static copy of the data. That means either stopping I/O to the volume or creating a separate local copy. While this has advantages in terms of performance, it can be costly in terms of disk space. EMC Open Replicator for Symmetrix solves this problem without requiring you to keep a second local copy by allowing you to create remote consistent point-in-time images of local volumes while still continuing with normal production.



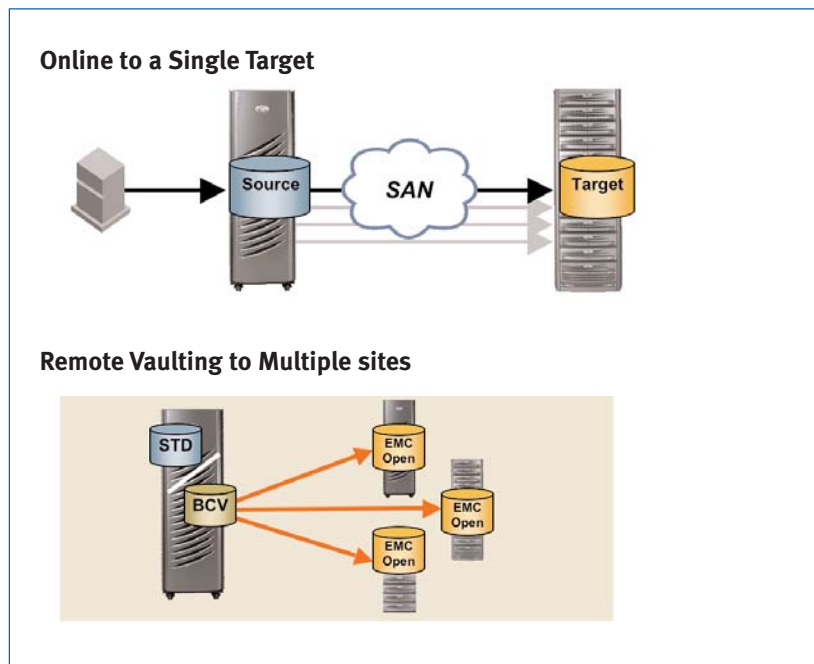
Remote data vaulting

All organizations that make tape backups and ship them offsite for safekeeping are practicing a form of remote data vaulting. Tape backups have several advantages and several disadvantages. Advantages include low cost and high flexibility. Disadvantages include RPOs and RTOs that range from 24 hours up to days, low reliability, and are subject

to handling damage and loss. Additionally, most tape backups are kept locally for quick retrieval, which can make it difficult to recover to an alternate location away from a disrupted region.

The solution to these problems is to be able to keep remote copies of your production information in a ready state, retrievable to any site that may require access to the data. Further, you need the ability to update that remote copy frequently with incremental updates, and may even need to keep copies in more than one location. And of course, you want to be able to do all of this without impacting application performance or availability and at an affordable cost.

EMC Open Replicator for Symmetrix solves these problems by allowing you to distribute up to 16 copies of a source volume to remote locations—over any distance—for easy online retrieval. You have the ability to incrementally update those copies at any point after creation. These remote copies may be made while the application volumes are online, either from the source volume directly or from an EMC TimeFinder® copy of the source volume.



Data migration

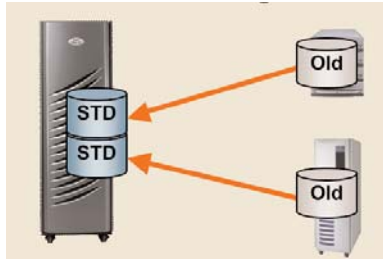
Technology migrations are an essential part of the IT landscape, and storage is no exception.

At its most simple form, data migration is the process of moving dynamic data from one set of static storage locations, either on a storage network or in captive storage locations, to another configuration or assignment of devices.

EMC Open Replicator for Symmetrix is designed to minimize the disruption, risk, and time-to-technology associated with data migration. By placing a Symmetrix DMX array with EMC Open Replicator for Symmetrix in the path of the I/O (between the host and the donor storage array), several advantages are realized.

First, all host I/O is processed against the Symmetrix DMX array while data is copied in the background, so there is a single disruption to applications; once the Symmetrix DMX array is in place, no further configuration impact is required. Secondly, data is available to host applications immediately—even if it hasn't yet been copied over, it is preferentially retrieved and available at a somewhat slower rate. Once all data has been copied, merely unplug the donor storage and remove it from the environment.

“Live” Data Migration Pull



- *Hosts are connected to Symmetrix DMX*
- *Copy begins in background*
- *Any host I/O request not yet copied is fetched*
- *Source can be non-Symmetrix*
- *Once data copy is complete, remove source storage*

Integration between EMC Open Replicator for Symmetrix and the TimeFinder family

EMC Open Replicator for Symmetrix functionality is fully supported by the EMC TimeFinder/Mirror and TimeFinder/Clone products. You can quickly and easily create point-in-time copies, using TimeFinder components, which can then be copied to remote storage systems using EMC Open Replicator for Symmetrix.

Choose the solution that's right for you

EMC Open Replicator for Symmetrix, along with the SRDF family of remote replication solutions, delivers the most comprehensive and robust suite of remote replication solutions available in the marketplace, providing high performance, a wide range of flexible connectivity options, and an industry-proven architecture. It enables you to balance your performance, availability, functionality, and economic requirements to achieve required service levels. Only EMC has such a broad set of choices for local and remote replication solutions, enabling you to meet your specific service-level requirements.

Maximize EMC Open Replicator for Symmetrix benefits with EMC Services

EMC Services delivers expert implementation of EMC Open Replicator for Symmetrix, leveraging EMC's extensive storage deployment best practices and proven methodology, to accelerate business results without straining your resources. Our services professionals have the technical expertise, skills, and resources needed to help you quickly realize the value of EMC Open Replicator for Symmetrix software in your Symmetrix environment without the risks associated with self implementation. The EMC Global Delivery Model ensures rapid, flawless service delivery to every customer in every engagement, regardless of location.

EMC Services for the IT lifecycle

EMC Services delivers results to our customers throughout the IT lifecycle—Plan, Build, Manage. Strategic storage consulting services from Information Solutions Consulting help companies achieve the maximum value from their information, at the lowest total cost, at every point in the information lifecycle. EMC delivers product-specific point solutions in addition to comprehensive custom planning, design, implementation, and integration services for EMC technology—everything from consolidation of your current resources to a strategic shift to a transformation of your environment to achieve information lifecycle management. EMC Customer Service—three-time winner of the SSPA STAR Award for outstanding mission-critical support—helps you keep your information available 24/7 to deliver competitive advantage and drive revenue. And EMC Global Education drives the value of your investment with a comprehensive portfolio of customer courses.

Ask your EMC sales representative about the full spectrum of services from EMC that can benefit your organization.

Take the Next Step

For more information on the EMC Open Replicator for Symmetrix solution, contact your EMC sales representative or authorized EMC value-added systems integrator. Or contact EMC directly.



EMC Corporation
Hopkinton
Massachusetts
01748-9103
1-508-435-1000
In North America 1-866-464-7381

EMC², EMC, CLARiiON, SRDF, Symmetrix, TimeFinder and where information lives are registered trademarks and Symmetrix DMX is a trademark of EMC Corporation. All other trademarks used herein are the property of their respective owners.

© 2004 EMC[®] Corporation. All rights reserved.
Produced in the USA. 10/04

Data Sheet
H1361

Installation Specification:

This product, if entitled to EMC installation, will be installed within one hundred twenty (120) days after shipment unless otherwise delayed by (i) customer's acts or omissions, (ii) mutual agreement, or (iii) conditions beyond EMC's control.