



EMC Symmetrix Management Console

Web-based device management for Symmetrix simplifies single-system management and reduces total cost of ownership

The Big Picture

- Intuitive, browser-based graphical user interface for managing EMC Symmetrix systems
- Provides discovery, configuration, monitoring, administration, and replication management
- Enables remote, browser-based access to Symmetrix systems
- Simplifies management of EMC SRDF and TimeFinder software family replication activities
- Enables monitoring of remote replication operations, physical drive status
- Command-Line Generator provides additional management flexibility
- Delivers faster time-to-deployment by speeding the configuration of new systems

With ever expanding data requirements and shrinking IT budgets, effective management and utilization of your data storage infrastructure is critical. For users of EMC® Symmetrix® systems, the most widely deployed high-end information storage system, Symmetrix Management Console provides intuitive, browser-based device management. Symmetrix Management Console reduces the complexities associated with command-line interfaces (CLI) for single-system management, enabling you to manage your Symmetrix system more efficiently and effectively. Symmetrix Management Console improves staff productivity and maximizes utilization of system resources while reducing access time to your critical business information.

Management choice and flexibility

Efficient management of your IT infrastructure is critical to providing your internal and external customers with the information required to operate the business successfully. With today's exponential data growth, your supporting storage infrastructure must be able to support this rapid growth and enable changes on the fly, all while simplifying the management process. Fortunately, EMC offers a portfolio of management products to help you minimize storage expenditures while increasing operational efficiencies.

Integrated end-to-end SRM

- Single-pane-of-glass interface
- Manage the fabric, storage, and hosts
- Unified view for multiple arrays



EMC ControlCenter
Symmetrix Manager

Stand-alone device management

- Intuitive, browser-based interface
- Manages the storage only
- Views one Symmetrix at a time
- Monitoring of SRDF/A operations



Symmetrix
Management
Console

Mainframe-centric management

- ISPF text interface
- Manages the storage only
- Integration with the mainframe



EMC z/OS
Storage
Manager

The EMC device management portfolio provides a wide spectrum of solutions from simple stand-alone device management to full integrated storage resource management (SRM) capabilities. Symmetrix Management Console is a critical component of the portfolio.

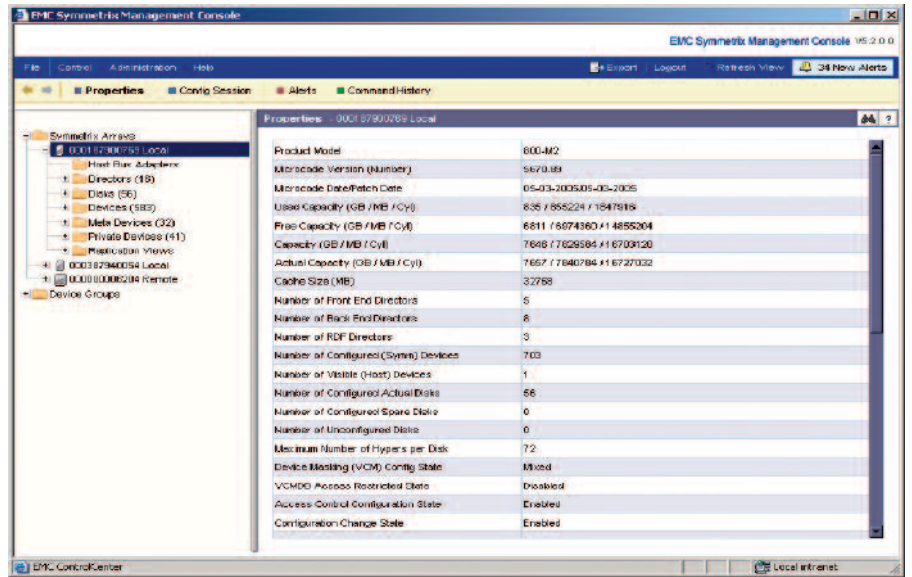
Each component delivers specific levels of system and environment management. ControlCenter Symmetrix Manager provides device management but is also integrated into the end-to-end EMC ControlCenter® SRM solution using a single-pane-of-glass interface which can manage the fabric, storage, and hosts while providing a unified view for multiple EMC and non-EMC arrays. Symmetrix Management Console provides full management control of Symmetrix systems for those environments that do not need SRM capabilities or simply need a light-weight graphical interface to complement or replace their use of CLI.

Symmetrix Management Console: intuitive browser-based management

As a small and easy-to-implement, browser-based graphical interface, Symmetrix Management Console can be hosted on a small Windows server and is accessible via a client Web browser from nearly anywhere in the world. Because of this architecture, Symmetrix Management Console is an ideal graphical complement to CLI usage and even to full EMC ControlCenter when you simply need to perform basic device management of a Symmetrix system. Symmetrix Management Console is also an exceptional tool for those comfortable with SYMCLI, but who might be looking for an easier graphical control of their Symmetrix. It is easy to install in just a few minutes.

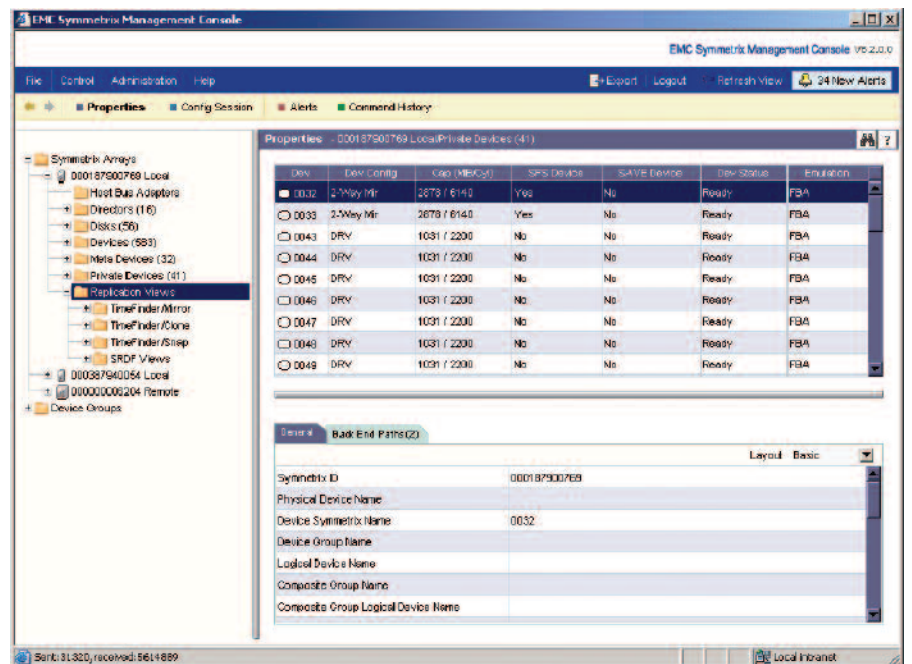
Simple and efficient Symmetrix system management

Symmetrix Management Console's browser interface enables you to quickly and efficiently perform device management activities on your Symmetrix system. Symmetrix Management Console helps you perform initial system discovery and configuration, including the ability to run discovery requests. The discovery requests will identify standard items such as arrays, logical devices, and physical drives. Symmetrix Management Console performs traditional Symmetrix configuration activities like device creation, configuration, and basic volume masking.



Dependable local and remote replication management

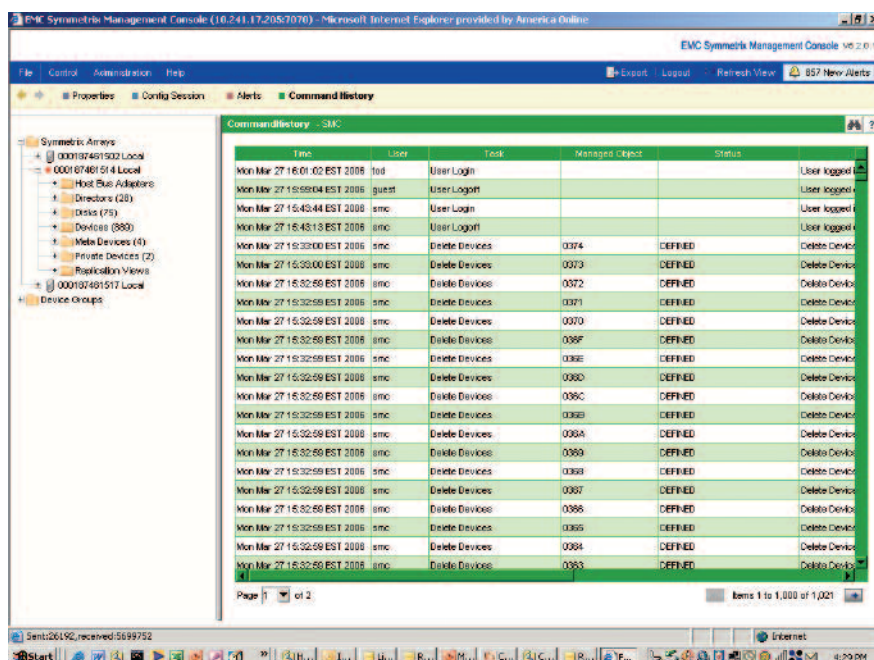
In today's business environments where information availability is paramount, the use of local and remote replication is extensive. In some cases replication activities are scheduled and run in a routine fashion day after day. However, many times ad hoc requests are made, such as the creation and subsequent access to EMC TimeFinder® business continuity volumes (BVCs). The BVCs might be used for restore operations, application testing and development, or as part of a one-time remote data replication process. All of these replication requests can be serviced quickly and easily with Symmetrix Management Console. Symmetrix Management Console supports features and functions of Symmetrix-based software such as the TimeFinder and SRDF® families of local and remote replication and even Open Replicator sessions. In addition, users can perform a management task using the GUI, then use the Command-Line Generator to create text that is used to repeat the task via CLI in the future.



Robust information and system security

Simple and efficient management of data is important, but it's only valuable if you can also provide multiple levels of secure access to specific hosts and users. That is why Symmetrix Management Console provides role-based user authentication and detailed auditing to protect your critical information from accidental or malicious activity. Symmetrix Management Console also enables users to manage Symmetrix access controls that authenticate and restrict host control of Symmetrix devices. In addition, Symmetrix Management Console supports iSCSI CHAP (Challenge Handshake Authentication Protocol) secrets and RADIUS (Remote Authentication Dial-In Service) server settings to provide additional authentication and authorization capabilities.

Symmetrix Management Console also simplifies day-to-day Symmetrix management responsibilities by providing realtime monitoring of Symmetrix systems, including a comprehensive set of alerts, including physical drive status, that can be easily viewed and acted upon. And, Symmetrix Management Console provides comprehensive audit records of host actions taken on the Symmetrix system.



EMC Services

EMC Services provides expert plan, build, and manage services, including strategic consulting services and point and custom solutions—from consolidation of your current resources to a transformation of your environment—to achieve information lifecycle management. Ask your EMC sales representative about the full spectrum of services from EMC that can benefit your organization.

Take the Next Step

Discover how EMC Symmetrix Management Console will enable you to reduce time-to-deployment and simplify daily management of your Symmetrix environment. Contact your local EMC sales representative or authorized EMC value-added systems integrator today. Or visit our website at www.EMC.com.



EMC Corporation
Hopkinton
Massachusetts
01748-9103
1-508-435-1000
In North America 1-866-464-7381

EMC², EMC, EMC ControlCenter, SRDF, Symmetrix, TimeFinder, and where information lives are registered trademarks of EMC Corporation.

© Copyright 2006 EMC Corporation.
All rights reserved. Published in the USA. 09/06

Data Sheet
C1144.1